
Bridgend Active Travel Network Maps Consultation

Pre-Statutory Report



Circulation status:	Draft
Date issued:	22 nd July 2021
Authors:	Tim John, Eni Hansen-Magnusson
Quality assurance:	
Sign off:	

Contents

Glossary of Key Terms	4
Part 1: Overview	5
Aim of this Update	5
The Active Travel (Wales) Act 2013	5
Where are we in the process?	7
Part 2: Engagement Summary	8
The Importance of Engagement	8
Multi-phased Engagement Process	8
Engagement Activities	11
Engaging people with protected characteristics	14
Engagement with schools	16
Part 3: Developing the Network & Draft Maps	19
Part 4: Route Maps Proposed for Statutory Consultation	27
Appendix A: Route Naming Schedule	36
Appendix B: Audit Scores (Existing Routes)	44
Appendix C: Stakeholder List and Engagement Activities	47

Glossary of Key Terms

Key Term	Description
Active Travel	Active travel is a term used to describe walking and cycling for purposeful journeys. According to the Active Travel (Wales) Act 2013 “walkers” includes people with disabilities as well as people who use motorised wheelchairs, mobility scooters or other aids to mobility.
Active Travel Network Maps (ATNMs)	Under the Active Travel Act, Local Authorities have a duty to map Existing and Future routes for walking and cycling within localities specified by Welsh Government.
Basic Network	A term used to describe all routes within an area available to walkers and/or cyclists.
Commonplace	Welsh Government provided online engagement platform.
Designated Localities/Towns	Built up areas defined by Welsh Government for which the mapping duty applies.
Existing Route	Refers to a route that has been audited against a set of Welsh Government specified criteria and deemed suitable for walking, cycling or both.
Future Route	Previously referred to as Integrated Network Routes (at 2017) and now referred to as ‘Future Routes’. These refer to routes that either do not yet meet the threshold of the Welsh Government specified criteria, do not yet exist, or have not yet been audited.
Mesh Network Density	Welsh Government outline an aim for ‘comprehensive’ networks within the designated towns within 15 years. If a town is imagined as a grid, comprehensive is described by the Welsh Government as an Active Travel Standard route for every 250m (in addition to the Basic Network of available routes).

Table 1: Glossary of key terms

Part 1: Overview

Bridgend County Borough Council in partnership with Sustrans Cymru, is undertaking a review of the Active Travel Network Maps (ATNMs) in the borough, in accordance with the duties outlined within the Active Travel (Wales) Act 2013¹ (referred to as the Act).

Bridgend County Borough Council have undertaken Stages 1 and 2 of the engagement process, and are preparing for the 12-week statutory element of the process, as required under the Duties of the Act.

Aim of this Update

This update aims to provide Members and internal colleagues with results from Phases 1 and 2 of the Engagement process, and incorporation of recommendations for Active Travel Route proposals to be taken to Statutory Consultation as a result of these (map extracts for each of the designated settlements are provided within Part 4 of this report).

The Active Travel (Wales) Act 2013

‘Active Travel’, as defined within the Act, refers to walking and cycling for everyday utility journeys (e.g. journeys to places of education, the shops or to work). The scope of routes considered under the Act therefore do not apply to recreational and leisure routes, unless they also provide sufficient evidence as a utility journey.

Designated localities/towns are covered under the Active Travel (Wales) Act 2013, the designated localities are derived from the Office for National Statistics’ Built Up Areas. The Built Up Areas are identified by splitting Wales into 50 metre by 50 metre squares. The predominant land use in each square is identified as either built up or not built up (containing buildings and similar infrastructure, or empty of development). Where built up squares sit next to each other, then they are amalgamated into larger built up areas. If settlements are within 200 metres of each other, then they were linked together into a single ‘Built Up Area’. Active Travel routes are only implemented either within Built Up areas or connecting Built Up areas, for this reason not all settlements in the borough will have an active travel route within the settlement or connecting the settlement if it does not meet the criteria set by the Act.

¹ <https://www.legislation.gov.uk/anaw/2013/7/contents/enacted>

As a minimum, routes must connect to all existing and planned schools and key trip attractors within the areas cited above. Routes should be well justified against robust evidence sources (described in further detail within Part 3). For this reason, not every route suggested as part of the consultation process has been included, though every suggestion has been considered against the evidence base that may support being included. Where routes have not been included as part of this project, they may be suitable for alternative funding streams.

It is the Council's understanding that routes included on the map approved by Welsh Government will be eligible for applications for funding to the Welsh Government's Active Travel Fund (although the successful outcome of applications for funding will be subject to providing sufficient evidence to support a 'Case for Change'). Some routes identified may be dependent on developer contributions, or liaison with external parties such as the Welsh Government and its Trunk Roads Agent and/or landowner agreements.

The proposals show existing routes that are currently suitable for active travel use (measured against Welsh Government approved Walking and Cycling Route Audit Tools, as well as those that have potential to meet the minimum active travel standards with improvement. Both routes identified as Existing and Future are eligible for funding.

The process so far has included public and stakeholder engagement, desktop study and site visits/audits of the proposed routes and related facilities to produce a draft network for submission. This report is split into three sections:

Part 1 provides a brief introduction to Active Travel and scope of this review.

Part 2 provides an overview on the engagement activities undertaken by Bridgend County Borough Council to obtain broad feedback from communities, stakeholders, delivery partners and members of the public.

Part 3 describes the process undertaken to get to the networks to be presented at the statutory consultation.

Where are we in the process?

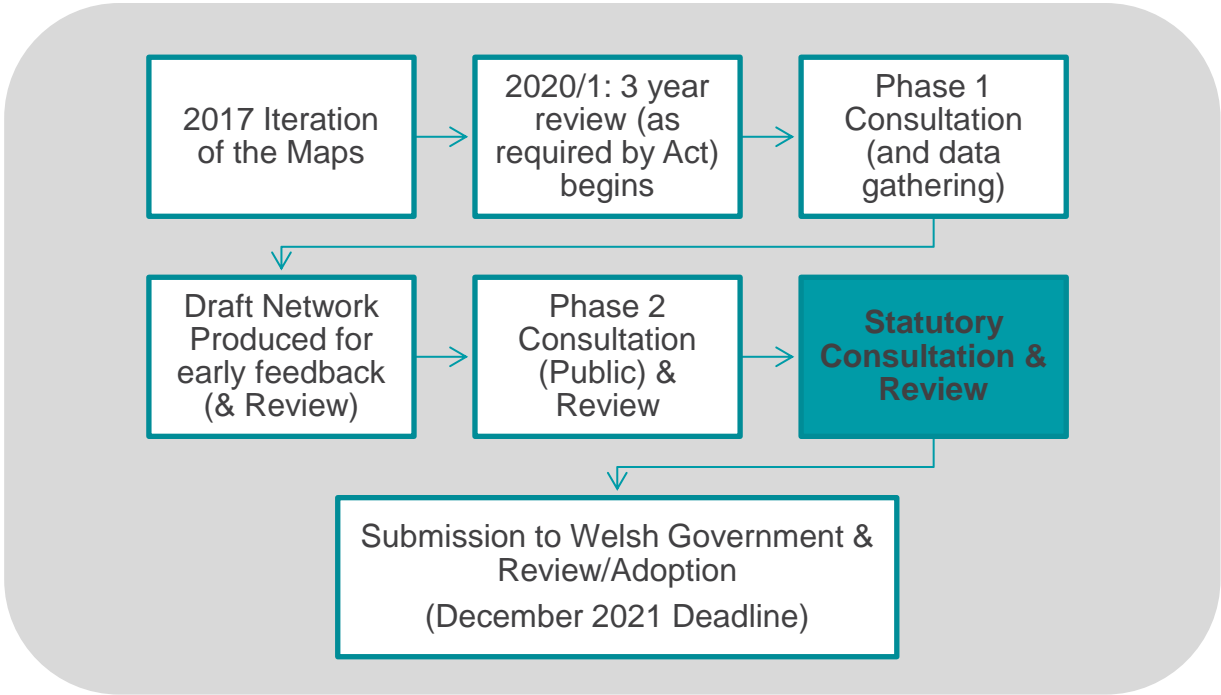


Figure 1: Process development stages

Part 2: Engagement Summary

The Importance of Engagement

Amendments to the Welsh Government's Draft Active Travel Delivery Guidance² place an emphasis on the importance of consultation and engagement in the development of Active Travel Network Maps (ATNMs).

The principles embedded within the guidance consider that Active Travel Networks developed with communities and by existing and future users, are more likely to be used and therefore the impact of any infrastructure delivered is likely to be greater.

The guidance suggests a multi-phased approach to engagement, with the first opportunity being at route identification stage. A second opportunity for engagement should take place following completion of the outline design to provide stakeholders a further opportunity to refine the scheme design. For ATNMs developed under the Active Travel Act, there must be a statutory 12 week public consultation period.

Multi-phased Engagement Process

Being determined to deliver a rigorous and meaningful engagement process, Bridgend County Borough Council began a delivery of engagement at the beginning of December 2020, being one of the first local authorities in Wales to launch the ATNM consultation.

To get reliable feedback and to give people the opportunity to stay involved throughout all stages of the consultation process, Bridgend County Borough Council chose a multi-phased approach of engagement. This goes beyond the minimum requirements of the Active Travel Delivery Guidance.

² <https://gov.wales/active-travel-guidance>

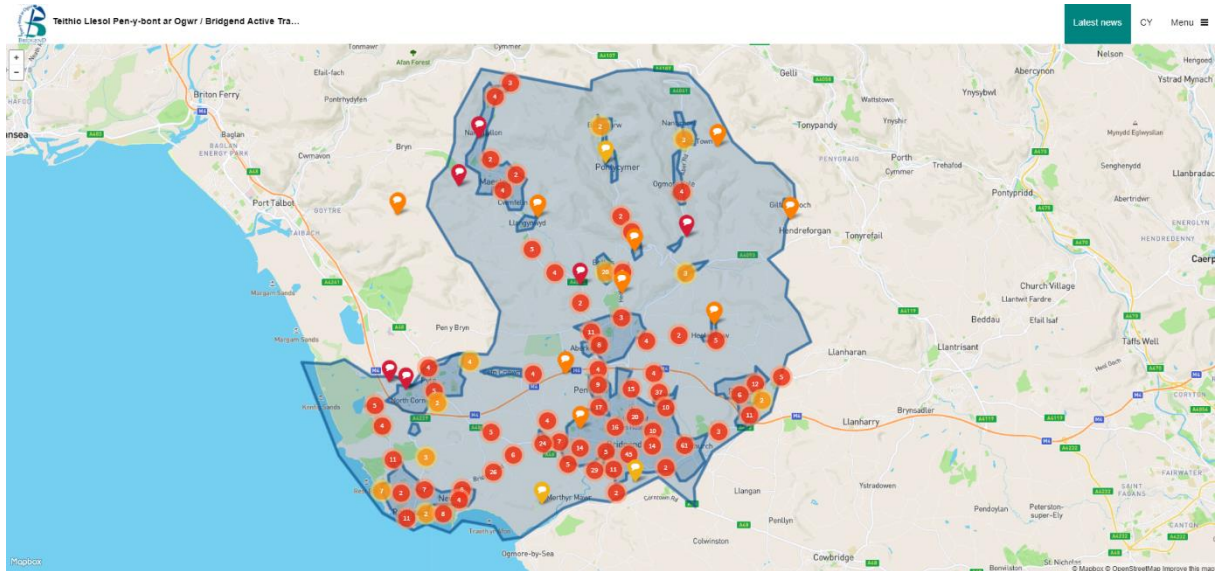


Figure 1: Online Engagement Platform (<https://bridgend.commonplace.is/> screenshot 22.01.2021)

The first phase of the ATNM consultation in the Bridgend County Borough ran for five weeks between 18 December 2020 and 22 January 2021 and was accessible through the online engagement platform Commonplace. The initial consultation asked specifically about barriers people face on their everyday journeys when walking or cycling.

The initial phase has seen a significant response rate, especially when considering the difficult circumstances for public engagement due to Covid-19 restrictions. In total, the consultation has seen:

- 911 people actively participating,
- 3376 individual visitors,
- 694 individual comments,
- 2405 agreements with comments.

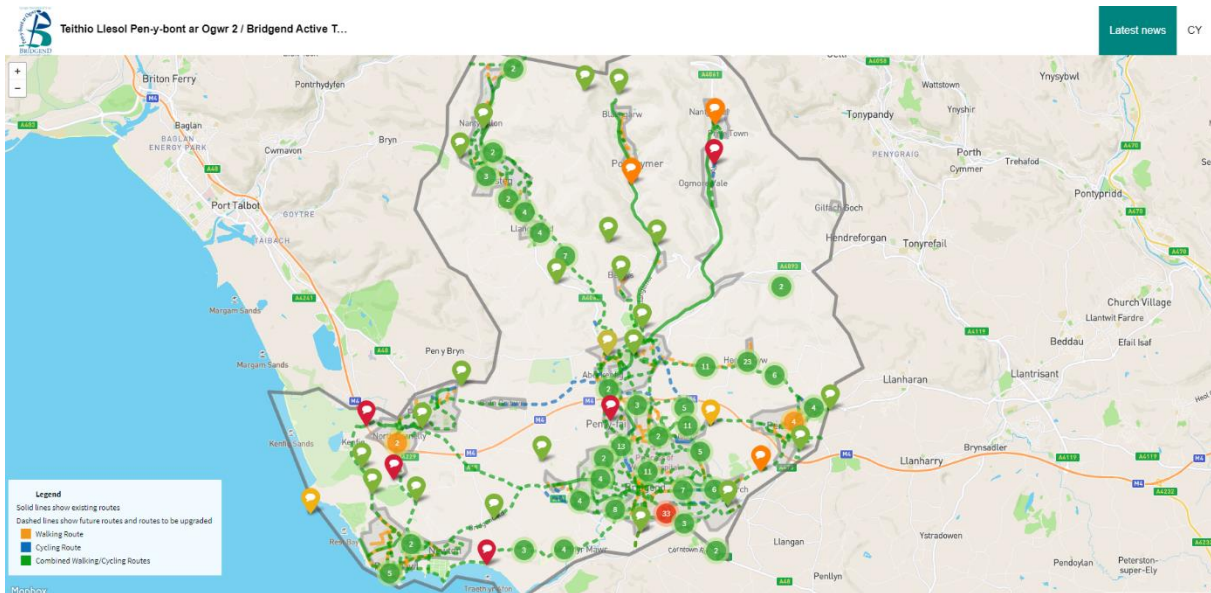


Figure 2: Commonplace Phase 2, Feedback on the Active Travel Draft Network Map (<https://bridgend2.commonplace.is/> screenshot 26.4.2021)

The second phase of the consultation aimed at getting people’s feedback on the proposed Active Travel Draft Network Map. The second phase has seen lower but still considerable levels of engagement. Again, the phase 2 consultation was made available through Commonplace and it was online for 7 weeks from 3 March 2021 to 26 April 2021. In total, the consultation has seen:

- 373 people actively participating,
- 2164 individual visitors,
- 271 individual comments,
- 742 agreements with existing comments.

Stakeholder mapping

An in-depth stakeholder mapping process formed the starting point of the consultation to make sure all audiences suggested within the Active Travel Delivery Guidance were included (i.e. children and young people, seldom heard groups, groups with protected characteristics, people who feel unable to travel actively now, as well as key stakeholders, delivery partners, wider public and persons that had requested to be consulted).

An anonymised version of the stakeholder list was shared with the local Sustrans volunteer network in the Bridgend County Borough to identify missing stakeholder groups.

Engagement Activities

Email Campaign

With launch of the consultation an email campaign reached out to over 260 local groups, community hubs, charities, sports clubs, businesses, adjoining local authorities, libraries, leisure centres, police stations, Elected Members, Community and Town Councillors, etc. (Complete list of groups contacted in Appendix C).

Social media

The launch was promoted through a press release across print and online media in the Bridgend County Borough and across the Sustrans social media channels (twitter and facebook) through repeated media posts (6.1.2021, 8.1.2021, 3.3.2021, 4.3.2021, 18.4.2021, 26.3.2021).

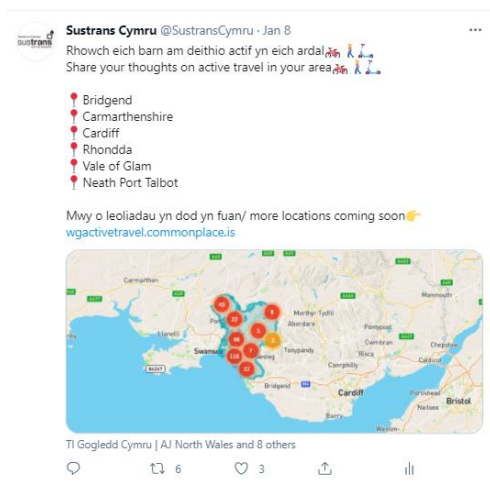


Figure 3: Phase 1 consultation: Twitter posts via Sustrans Cymru, Screenshots January 2021



Figure 4: Phase 2 Consultation: Twitter/Facebook posts via Sustrans Cymru, Screenshots March 2021

43 local groups were contacted directly through personal messages via facebook.

Paper copies of Consultation map and survey

To ensure accessibility of the consultation for as many people as possible, a paper version of the consultation map and survey in both English and Welsh was made available through mail to individuals upon request.

Printed Posters

Printed posters were distributed to the main post offices, libraries, leisure and sports centres, and GP surgeries in the designated settlements.

Dweud eich dweud ynghylch

Cerdded a Beicio yn eich Cymuned

Helpwch ni i wella llwybrau beicio a cerdded yn eich cymdogaeth a siapiao rhwydwaith Teithio Llesol y Dyfodol trwy rannu eich barn yn ymgynghoriad Teithio Llesol y Cyngor.



Rydym wrthi'n adolygu'r rhwydwaith Teithio Llesol presennol yn Betws, Pen-y-bont, Gilfach Goch, Maesteg, Cwm Ogwr, Pencoed, Pontycymer, Porthcawl a Pyl er mwyn canfod llwybrau newydd a llwybrau presennol sydd angen eu gwella. Bydd eich adborth a'ch syniadau'n helpu i greu mapiau rhwydwaith newydd ar gyfer rhwydwaith Teithio Llesol y dyfodol ym Mhen-y-bont ar Ogwr a fydd yn cael eu cyflwyno i Lywodraeth Cymru fis Rhagfyr 2021.

Cynnwch ran a rhanu'ch barn gyda ni ar ein tudalen ymgynghori.

<https://bridgend.commonplace.is>

Mwy o wybodaeth:
01656 642528
traffic@transportation@bridgend.gov.uk
www.bridgend.gov.uk/cy/preswylwyr/fyrrdd-trafnidiaeth-a-pharcio/llwybrau-teithio-lesol/

Have your say on

Walking and Cycling in Your Community

Help us to improve cycling and walking routes in your neighbourhood and to shape the future Active Travel network by sharing your views in the Council's Active Travel consultation.



We are reviewing the existing Active Travel network in Bettws, Bridgend, Gilfach Goch, Maesteg, Ogmere Vale, Pencoed, Pontycymer, Porthcawl and Pyle to identify new routes and existing routes that need improvement. Your feedback and ideas will help to consider new network maps for the future Active Travel network for the Vale of Glamorgan, which will be submitted to Welsh Government in December 2021.

Get involved and share your views with us on our consultation page.

<https://bridgend.commonplace.is>

For more information:
01656 642528
traffic@transportation@bridgend.gov.uk
www.bridgend.gov.uk/residents/roads-transport-and-parking/active-travel-routes/

Figure 5: Consultation poster (print version and digital flyer in Welsh and English), distributed to libraries, post offices, leisure centres, and GP surgeries.

Leaflet drop

To get better feedback from areas with low uptake of engagement, a leaflet in Welsh and English was distributed in underrepresented areas across Maesteg, Ogmere Vale, Pontycymer and Pyle between 4 and 8 March 2021. A total of 2000 leaflets were distributed to random households across the four identified settlements.



Figure 6: A5 flyers for leaflet drop in Maesteg, Ogmere Vale, Pontycymer, and Pyle, 4-8 March 2021

Webinar for Internal Stakeholders

Elected Members, Community and Town Councillors as well as different Bridgend County Borough Council teams/sections were invited to an online webinar, which gave an overview on the ATNM consultation process and introduced them to the Active Travel Draft Network Map. A link to the draft network maps was shared with all internal stakeholders and they were given the opportunity to give feedback on the network plans before they were released to public in the second stage of consultation.

The webinar took place on Microsoft teams on 9 February 2021 and was attended by 20 people.

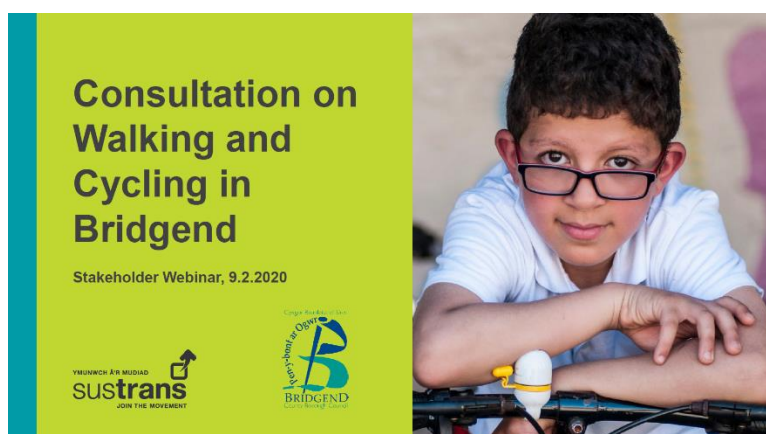


Figure 7: Screenshot of Online Presentation for Elected Members, Town and Community Councillors and BCBC Teams and Introduction to the Active Travel Draft Network Map, 9.2.2021.

Engaging people with protected characteristics

On behalf of Bridgend County Borough Council, Sustrans reviewed the demographic, geographic and equalities data on respondents after the first phase of engagement, matching them with Census 2011 data in order to identify underrepresented groups/areas to help focus further engagement activities during statutory consultation. The results showed overall good matches between respondents and population data, but showing discrepancies in the engagement levels of people under 24 and people aged 65 and over. As a result, engagement activities in Phase 2 focused more on these three underrepresented groups.

The Royal Institute for the Blind, Guide Dogs Cymru and the Welsh Council for the Blind were consulted with on several occasions to provide opportunities for **visually impaired people** to give their feedback. Coordinated through the Wales Vision Forum, people with sight loss gave their feedback through an online questionnaire, by post, at virtual member forums and over the telephone. To adjust receive specific feedback on barriers **people who are living with deafblindness** face, direct conversations took place with a member of Deafblind Cymru.

To promote the consultation among **young people** and **vulnerable groups**, conversations and meetings took place with the Future Generations Commissioner for Wales, the Children's Commissioner for Wales and the Council for Voluntary Youth Work.

Further, a virtual meeting with the **Youth Council Bridgend and the Bridgend Children's Rights and Participation Worker** took place on 2 March 2021, introducing the Youth Council members to the ATNM consultation and giving them the opportunity to sharing their thoughts and ideas on the future Walking and cycling network directly.

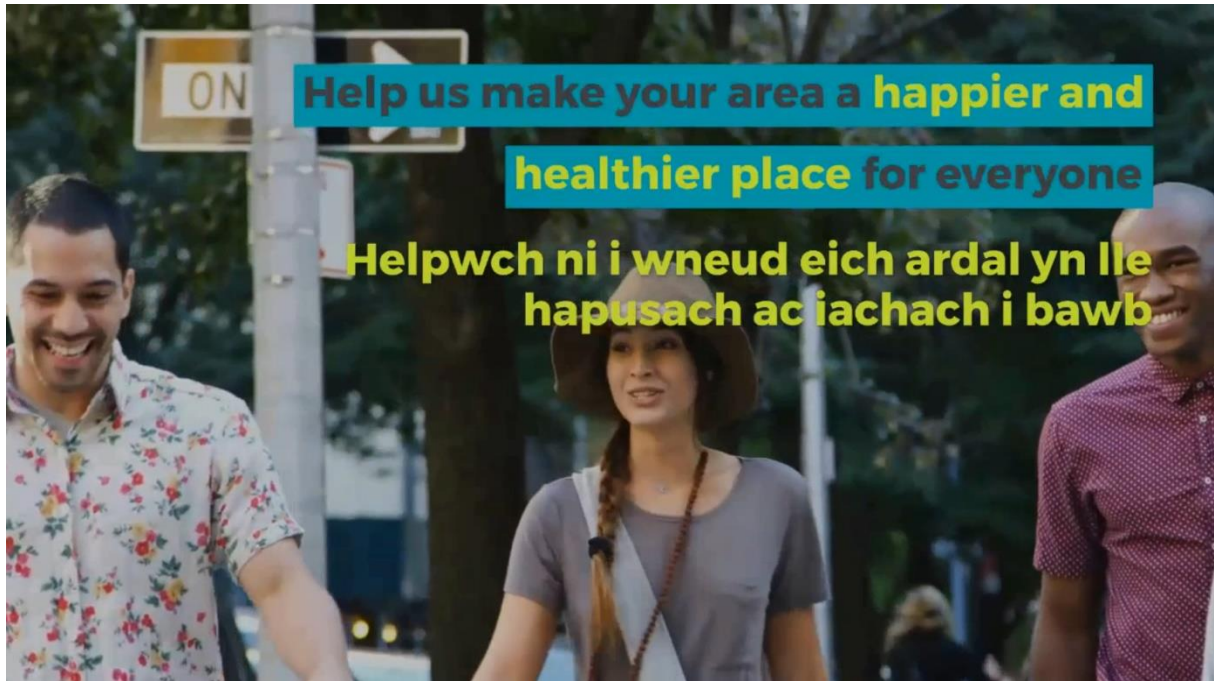


Figure 8: Promotion video on the consultation targeted at young people, shared through Twitter/Facebook. Screenshot 3.3.2021

To promote engagement among **young and older people**, a bilingual flyer and poster was shared specifically with groups with a focus on young people and on elderlies, such as the Bridgend Family Information Service, Bridgend Youth Development team, BAVO, Ageing Well in Bridgend, Bridgend SHOUT, Age Cymru West Glamorgan, the Glamorgan Women’s Institute or Merched Y Waur Glamorgan and others.

Cerdded a beicio yn eich cymuned

Hoffem glywed eich barn am y llwybrau cerdded a beicio sy'n cael eu cynnig ar gyfer y dyfodol yn eich ardal.

Yn ddiweddar, fe wnaethom eich gwaheddi i ddiwedd wrthym am y rhwystrau rydych chi'n eu hwynebu wrth gerdded a beicio ar eich swmreiau bob dydd. Rydym wedi rhoi ystyriaeth i'ch holl sylwadau ac rydym wedi drafftio cynlluniau ar gyfer llwybrau'r dyfodol ym Mhen-y-bont ar Ogwr.

Hoffem glywed eich barn am y rhwydwaith arfaethedig. Rhwch wybod i ni os ydych chi'n credu e'n bod ni wedi cael pethau'n iawn, neu os nad ydym, pa welliannau yr hoffech eu gweld!

Ewch i gael golwg ar y map drafft:
<https://bridgend2.commonplace.is>

Am fwy o wybodaeth:
 01656 642628
traffic&transportation@bridgend.gov.uk
<https://www.bridgend.gov.uk/cy/preswylwyf/nyrd3-trafidaieth-a-pharco/llwybrau-hathio-keel/>

*Mae copïau wedi'u hargraffu o'r mapiau yn Gymraeg neu Sbaeneg ar gasr ar gasr.

Walking and cycling in your community

We want to know your thoughts on the proposed future routes for walking and cycling in your area.

Recently, we invited you to tell us barriers you face when walking and cycling on your everyday journeys. We've taken all your comments on board and have drafted future route plans for Bridgend county borough.

We want to hear your thoughts on the proposed network. Let us know if we've got it right, and if not, what improvements you'd like to see!

Take a look at the draft map:
<https://bridgend2.commonplace.is>

For more information:
 01656 642628
traffic&transportation@bridgend.gov.uk
<https://www.bridgend.gov.uk/residents/roads-transport-and-parking/active-travel/routes/>

*Printed copies of the maps in English or Welsh are available on request.

Figure 9: Flyers/Posters for Phase 2 Engagement, focused on groups with protected characteristics.

Please see Appendix C for a full list of groups contacted and directly involved.

Engagement with schools

All Primary, Secondary and Special schools across the Bridgend County Borough were contacted in an initial email campaign on 8.3.2021 to raise awareness for the Phase 2 consultation on Commonplace.

The launch of the school survey was also promoted through twitter, by tagging a majority of the schools in Bridgend.



Figure 10: Twitter post on launch of school survey, screenshot 4.3.2021

The main engagement with schools took place through an online school survey, which was developed by the Sustrans team of Active Journeys Officers, with questions specifically aimed at young people. Students of all Bridgend schools of Y5 and older, families and carers were invited via email on 13.5.2021 to provide their input through a bilingual online survey, which was individualised for each school.

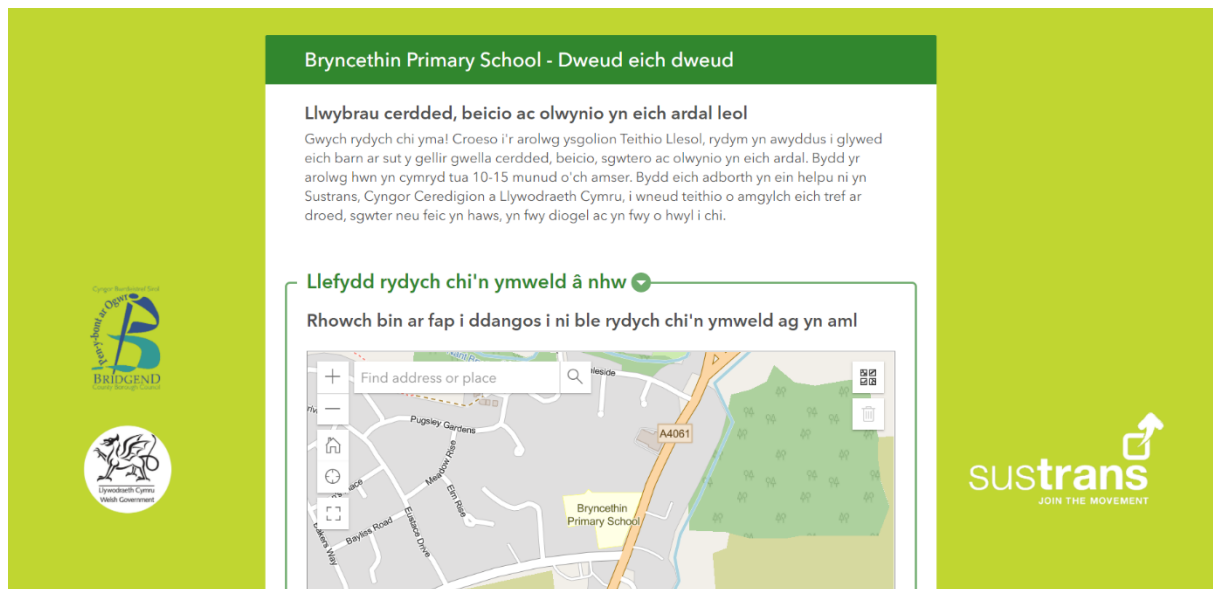


Figure 11: School specific online survey, example in Welsh for Bryncethin School, screenshot 25.5.2021

To increase participation amongst students, the school survey was promoted by the Bridgend Education and Family Support Directorate Unit – Directorate Support Unit (EDSU) at a meeting with all Bridgend schools head teachers.

If teachers wanted to expand on the consultation and Active Travel in general during their lessons, they were provided with additional material, such as a bilingual lesson plan on Active Travel and the ATNM consultation, a home learner guidance (guidance for students currently unable to attend school) as well as bilingual instructional/informative videos that could be shown in the classroom.

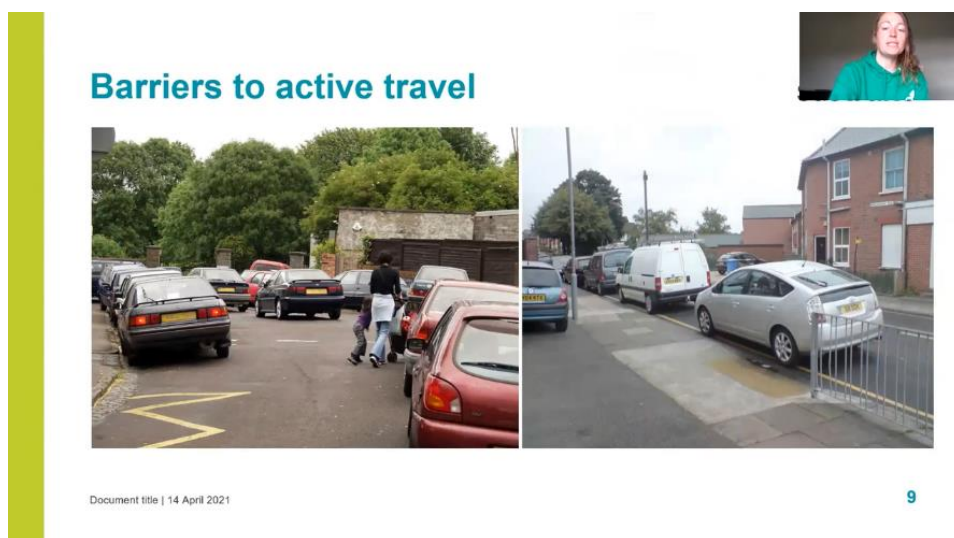


Figure 12: Instructional video on Active Travel and the ATNM Consultation, Screenshot Youtube 25.5.2021

The online survey was available for 5 weeks and was filled in by 388 students from 10 different schools:

School	Number of respondents
Penybont Primary School - Survey	36
Maesteg Comprehensive School - Survey	43
St Roberts R.C Primary School - Survey	34
Cwmfelin Primary School - Survey	21
Garth Primary School - Survey	44
YGG Llangynwyd - Welsh Survey	58
St Roberts R.C Primary School - Survey	40
Litchard Primary School - Survey	58
Héronsbridge Special School - Survey	48
Pil Primary School - Survey	6
Total:	388 respondents

Part 3: Developing the Network & Draft Maps

The network development process has begun from a base of the 2017 iterations of the network maps submitted to, and accepted by, Welsh Government - provided on the Bridgend County Borough Council webpages via this link:

<https://www.bridgend.gov.uk/residents/roads-transport-and-parking/active-travel-routes/>

Please note the maps are being updated as part of this process, and those accepted at 2021 will supersede the previous versions. To develop this network for the 2021 iteration, we have investigated three main sources of evidence, outlined within Table 3.

Activity	What has this involved?	Why is this useful for network development?
Desktop Study	<p>Collating data to help justify route alignments, including (but not limited to):</p> <ul style="list-style-type: none"> - Locations of key trip attractors - Locations of potential barriers - Commute flows - Ward statistics (including population density) - Identifying new developments since 2017 	<p>This has allowed us to identify likely priority routes (in associated with site visits and engagement feedback) for consideration. The priorities will be determined in further detail once alignments have been reviewed by cabinet.</p> <p>This has also allowed us to support alignments with a robust evidence base that will aid in justifying the route alignments when presented to Welsh Government for approval.</p>
Site Visits	<p>Visiting routes during 2020 (outside of lockdown restrictions) to record existing and potential for improvements.</p>	<p>Has allowed us to ensure the 2017 iteration of the map is still valid (e.g. routes are still suitable for walking/cycling), and explore any alignments that justify addition.</p> <p>This also, in combination with desktop study and engagement feedback, highlights any deliverability constraints for proposed routes.</p>
Engagement Feedback (process described within Part 2)	<p>Commonplace Data, ongoing liaison with stakeholder groups and school-specific engagement via the Sustrans South East Wales Active Journeys Officer.</p>	<p>Key to the network development as feedback from everyday users (e.g. may identify considerations missed at time of site visit)</p>

Table 3 – Activities undertaken to develop network

Mapping systems have allowed us to collate these datasets for each of the designated localities in the Bridgend County Borough area. Snapshots of the network are shown within the following Figures (note: not all layers considered are shown on these examples to improve clarity).

A Base Map showing key destinations and settlements is identified for suitable overlaying of data, seen within Figure 13.

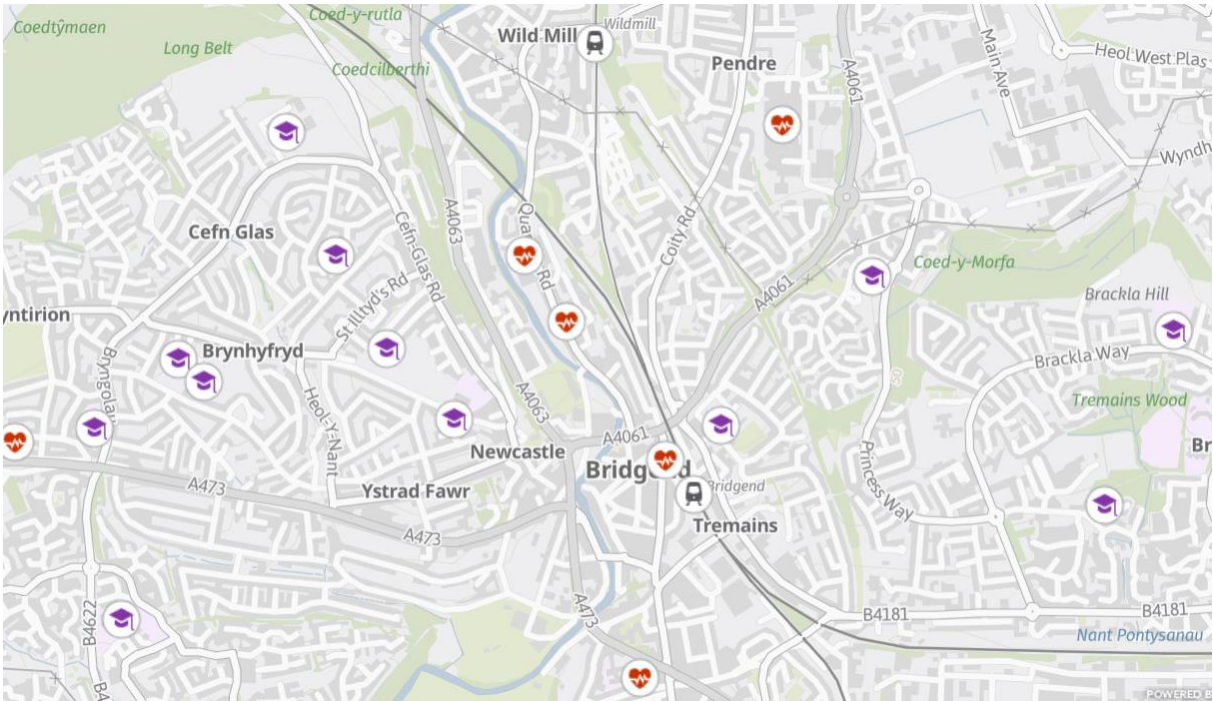


Figure 13 -Example of overlaying data (note: not all destinations considered are shown on map to aid image clarity)

The route map that was published in 2017 showing the Existing and Future (previously 'integrated') routes identified for walking and cycling is overlaid below, seen in Figure 14.

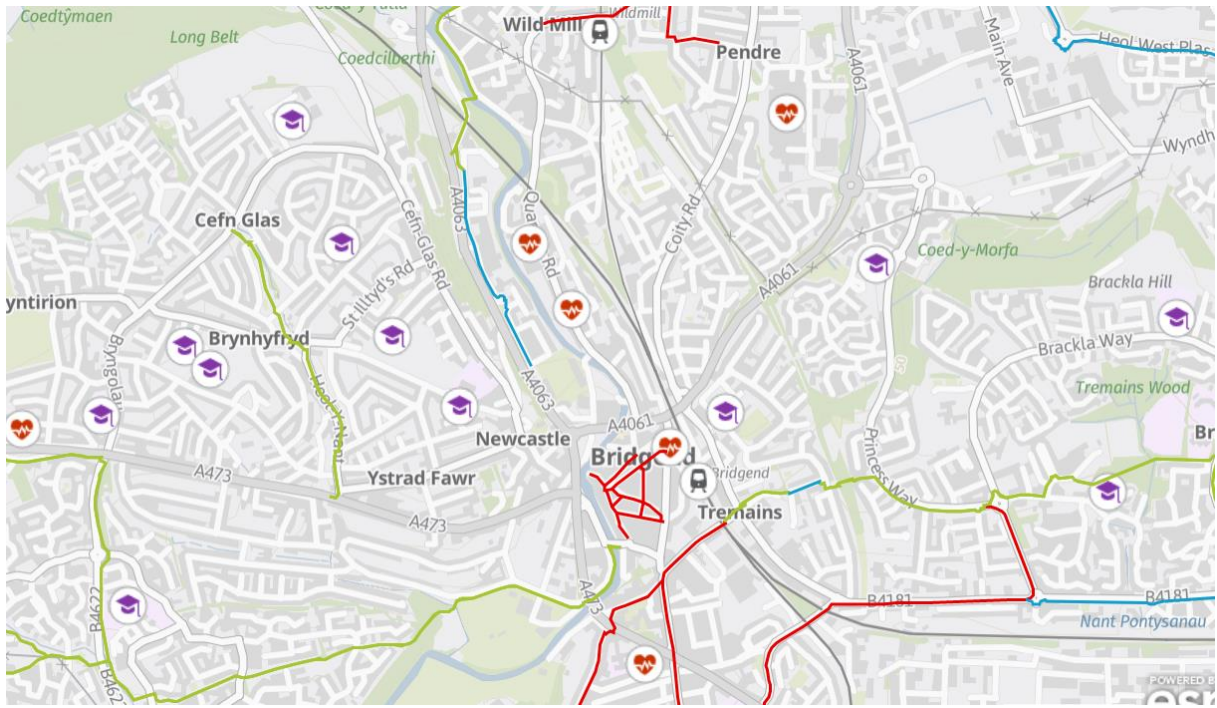


Figure 14 - Overlay of existing network routes (2017 iteration)

Model flows, such as those based on census journey to work data, were also utilised to guide alignments of potential future routes (alongside engagement feedback, other sources of desktop study and site visits). An example of the model flows for cycling in the Bridgend area is shown in Figure 15.

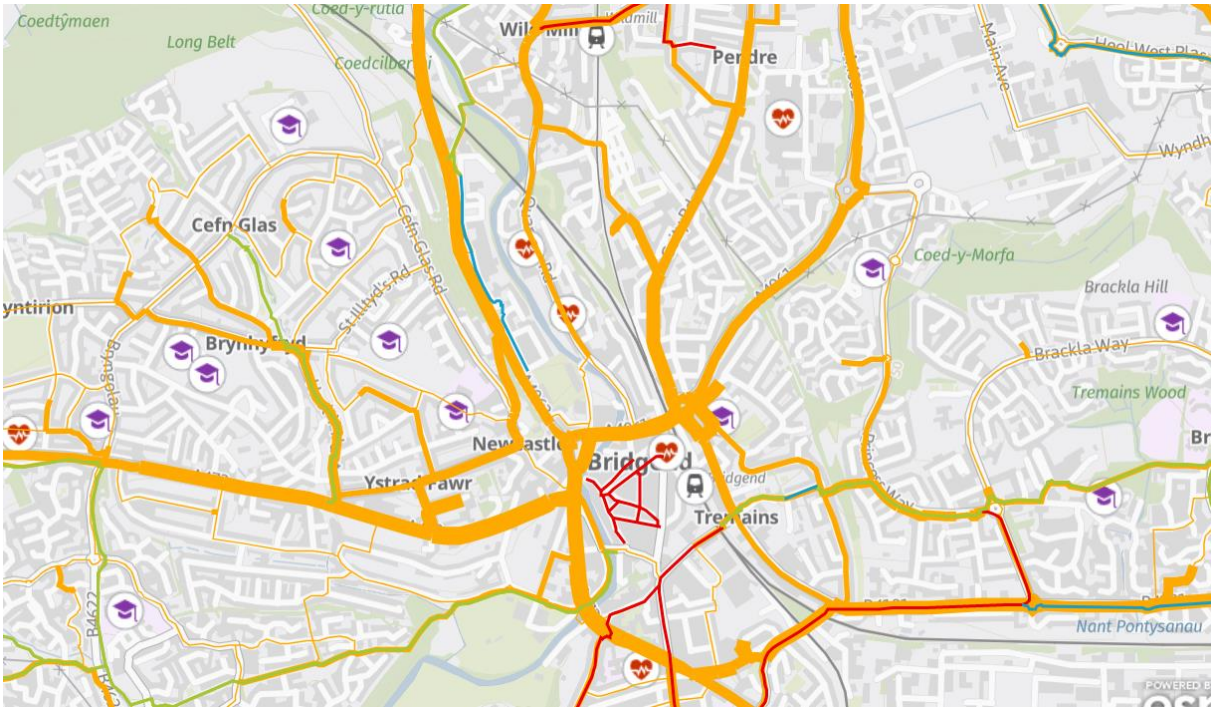


Figure 15 – Example of Modelled Flows for Cycling in Bridgend
(A similar model for walking was also considered for the walking network development)

The draft routes proposals were then submitted for a Phase 2 review, to ensure the map accurately reflected the engagement feedback from Phase 1. Detailed results from Phases 1 and 2 are described within Part 2 of this report.

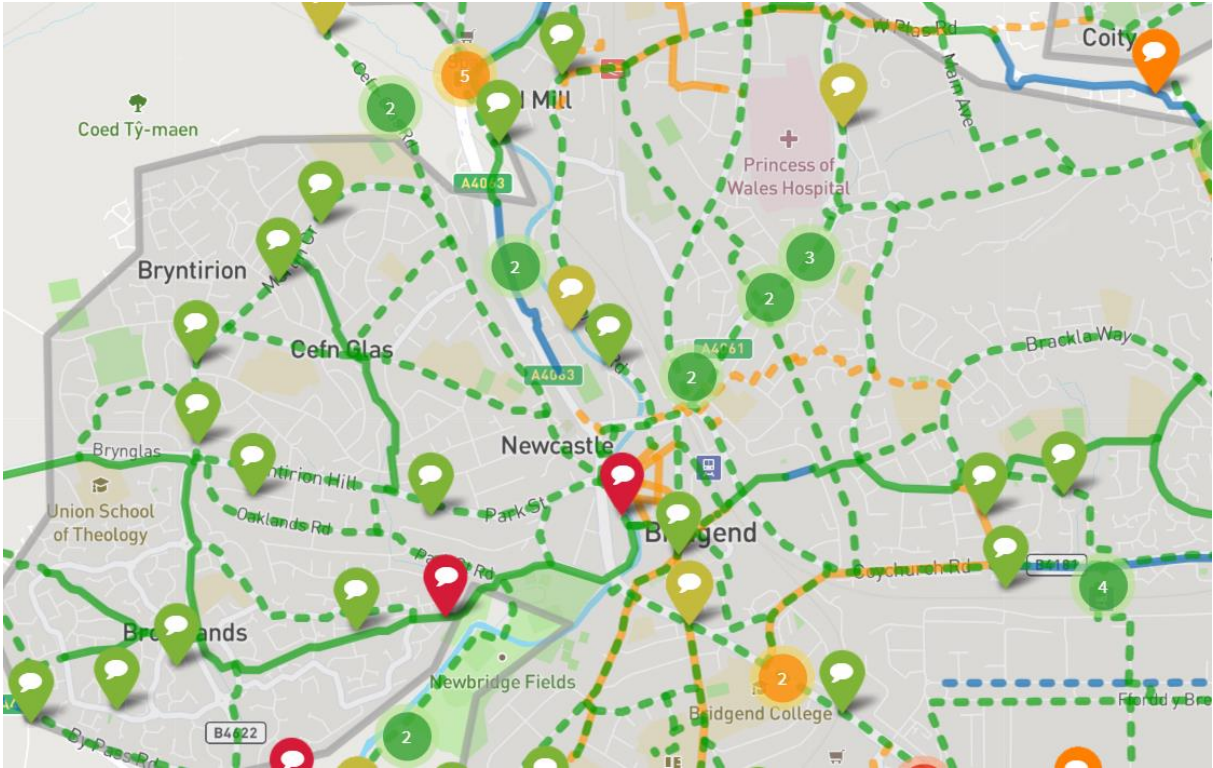


Figure 1613 – Commonplace Phase 2

(Full details and results of the Phase 2 Engagement are described in detail within Part 2).

To ensure the comments were taken into account, they were added to the GIS mapping system, with the previously proposed routes overlaid.

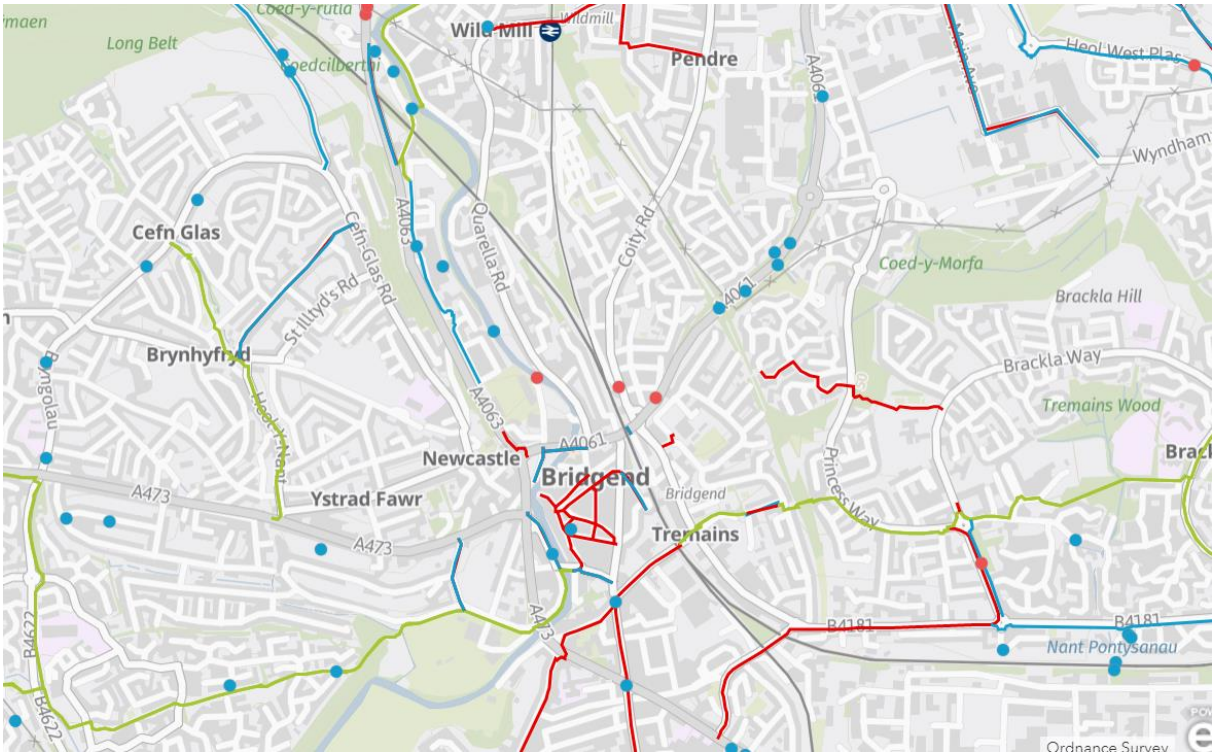


Figure 17 – Comments overlaid against network proposals (and in process of review)

Overall, respondents were found to agree with the route proposals where they were commenting upon a route already identified, though suggestions for specific designs to consider along certain route sections were received and should be considered at the detailed design stage.

As well as the route/location you have commented on, do you think the network of routes shown on this map will encourage you to walk/cycle more for everyday journeys?

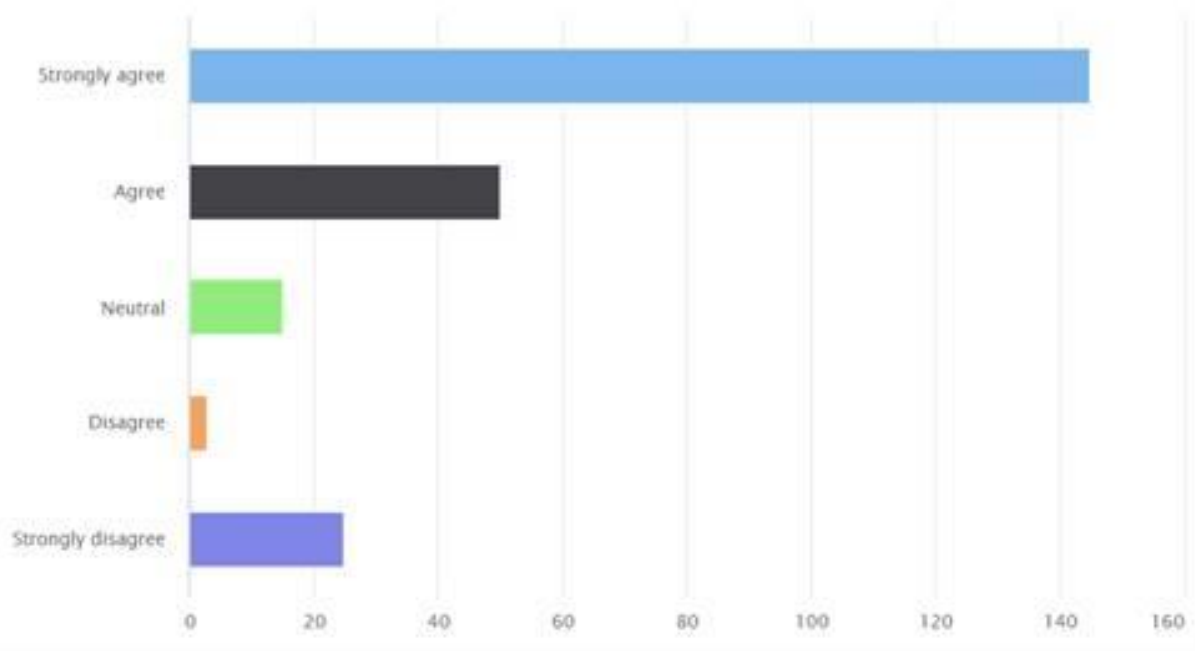


Table 5 – Number of respondents who agreed/disagreed that the network would encourage them to walk/cycle more for everyday journeys

In accordance with the Active Travel Act Guidance, the routes for statutory were then classified into Primary, Secondary and Local Routes.

Route Classification	Definition (as outlined within the Active Travel Act Guidance 2020) for Walking	Definition (as outlined within the Active Travel Act Guidance 2020) for Cycling
Primary	Busy urban shopping and business areas and main pedestrian routes	The key corridors between neighbourhoods/residential areas and a town or city centre; routes between districts and neighbourhoods; cycle routes which are (or will be) used by a great many cyclists. Links to main public transport interchanges.
Secondary	Medium usage routes through local areas feeding into primary routes, local shopping centres etc.	The links between the primary routes; links to trip attractors such as schools, colleges, employment sites; cycle routes which are an attractor for a more limited range of users;

		routes which may cater for fewer cycle journeys than the primary routes but are still of strategic importance within the network. Links to local public transport interchanges and stops.
Local Routes (Cycling)	Linking local access footways through urban areas and busy rural footways.	All other all-purpose roads, greenways and bridleways that are not necessarily part of a designated route (e.g. many residential streets). This basic network of local routes (see para 14.4), although lower in the hierarchy, forms an important part of the cycle network, providing secondary and tertiary routes connecting to the strategic routes.
Linking/Local Access Routes (Walking)	Footways associated with low usage, short estate roads to the main routes and cul-de-sacs.	

Table 7: Primary/Secondary and Local Route classifications

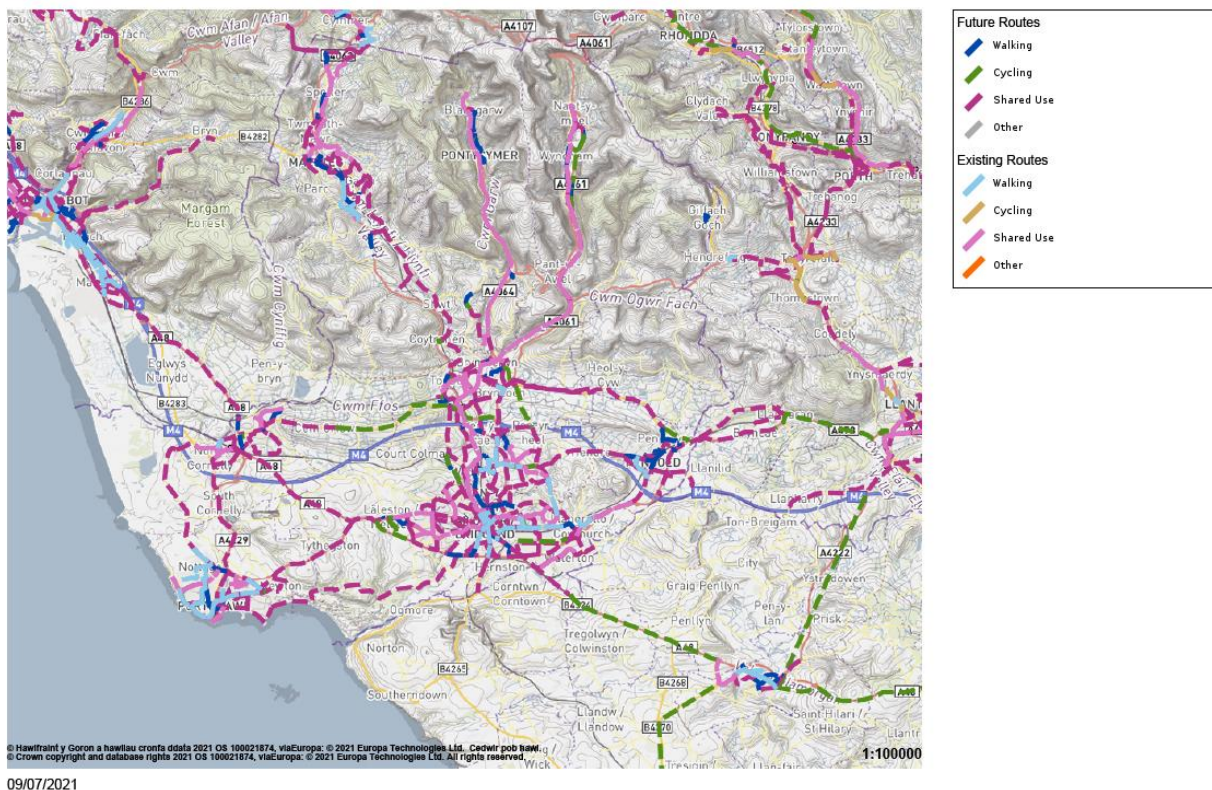
Part 4: Route Maps Proposed for Statutory Consultation

This has resulted in the following network of routes being proposed in each area (note this report contains screenshots from the Welsh Government's Data Map Wales system), a shapefile of which can be downloaded by BCBC for upload onto the council's interactive mapping systems to aid the Statutory consultation.

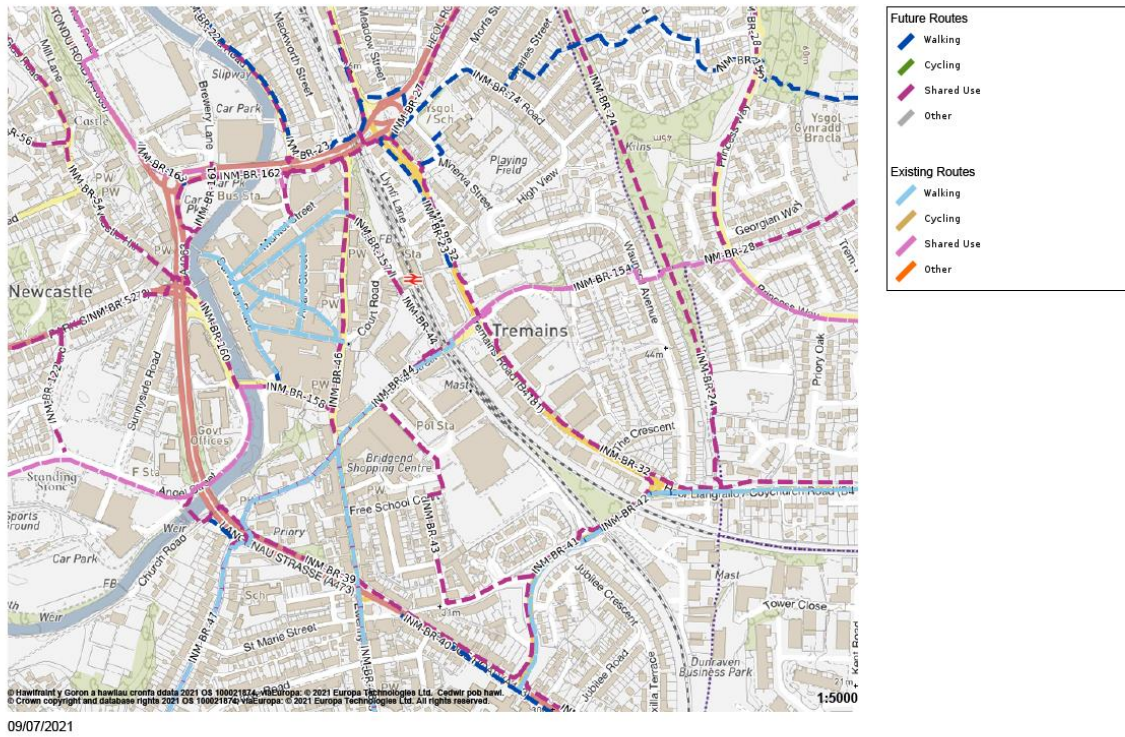
A naming schedule detailing routes and sections is provided within Appendix A.

Route priorities for development schedules will be determined against a number of criteria in further detail once the routes have been discussed at Cabinet.

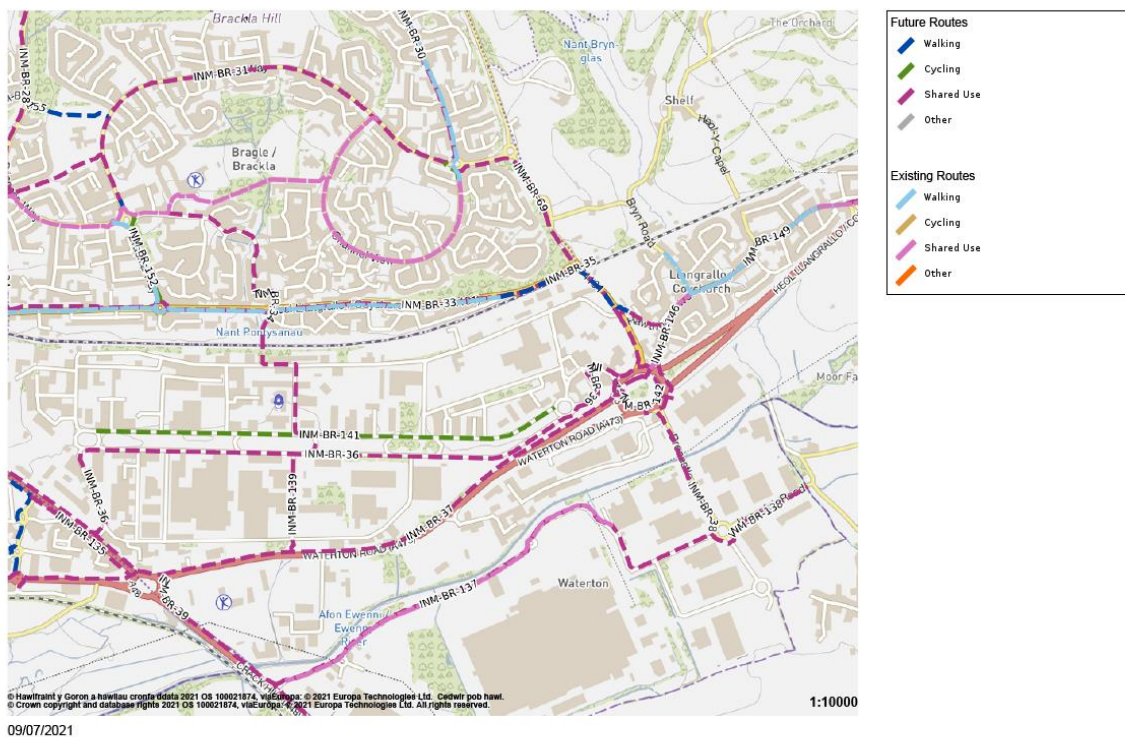
Bridgend Overall



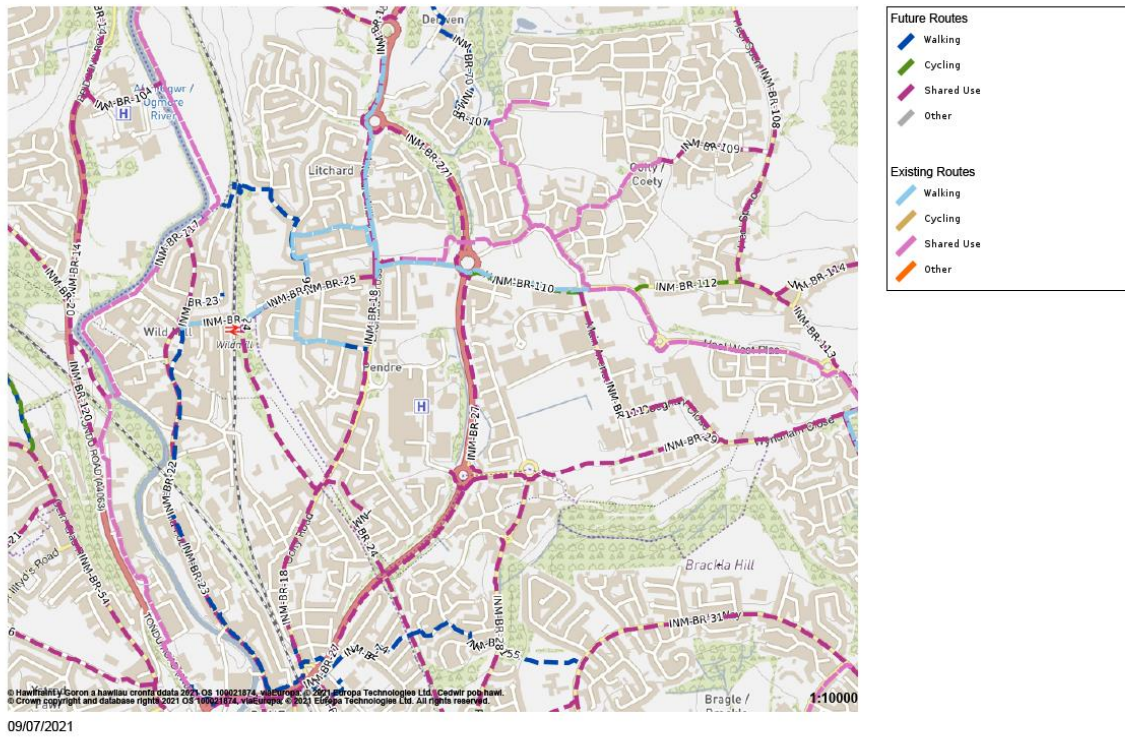
Bridgend Centre Existing and Future



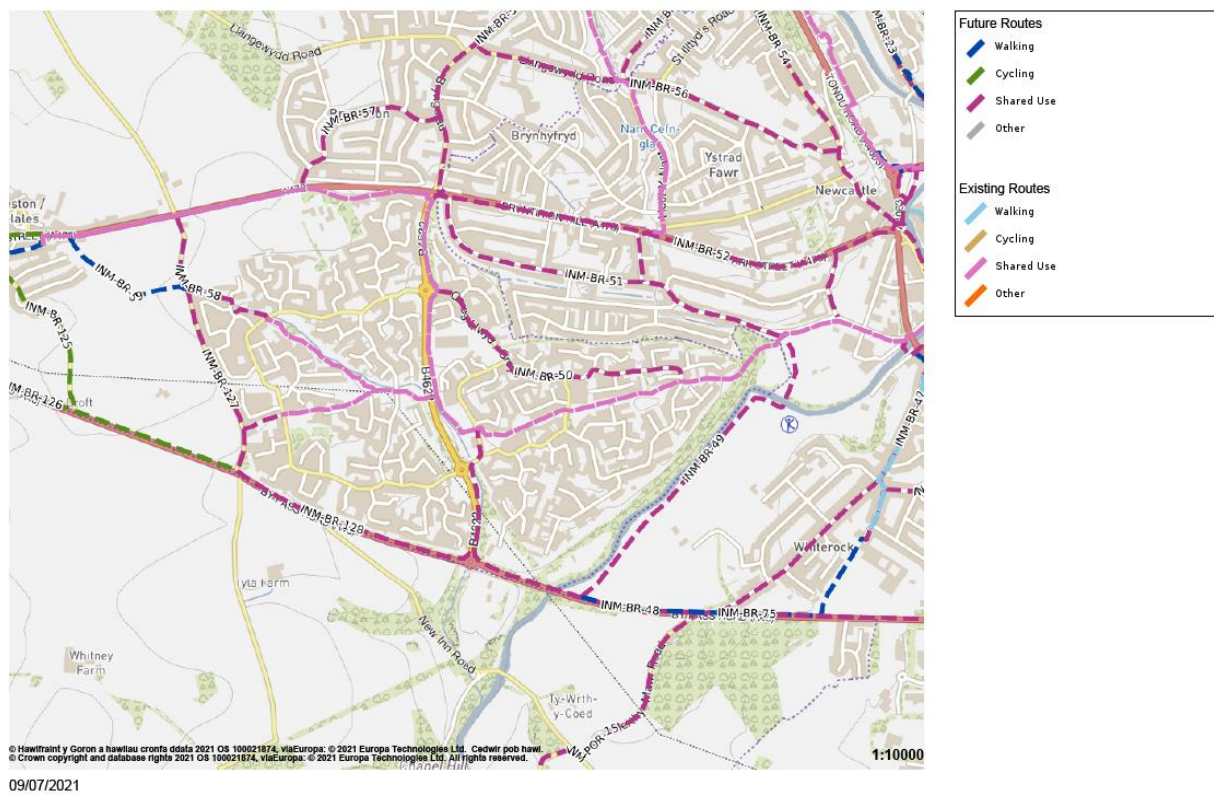
Bridgend East Existing and Future



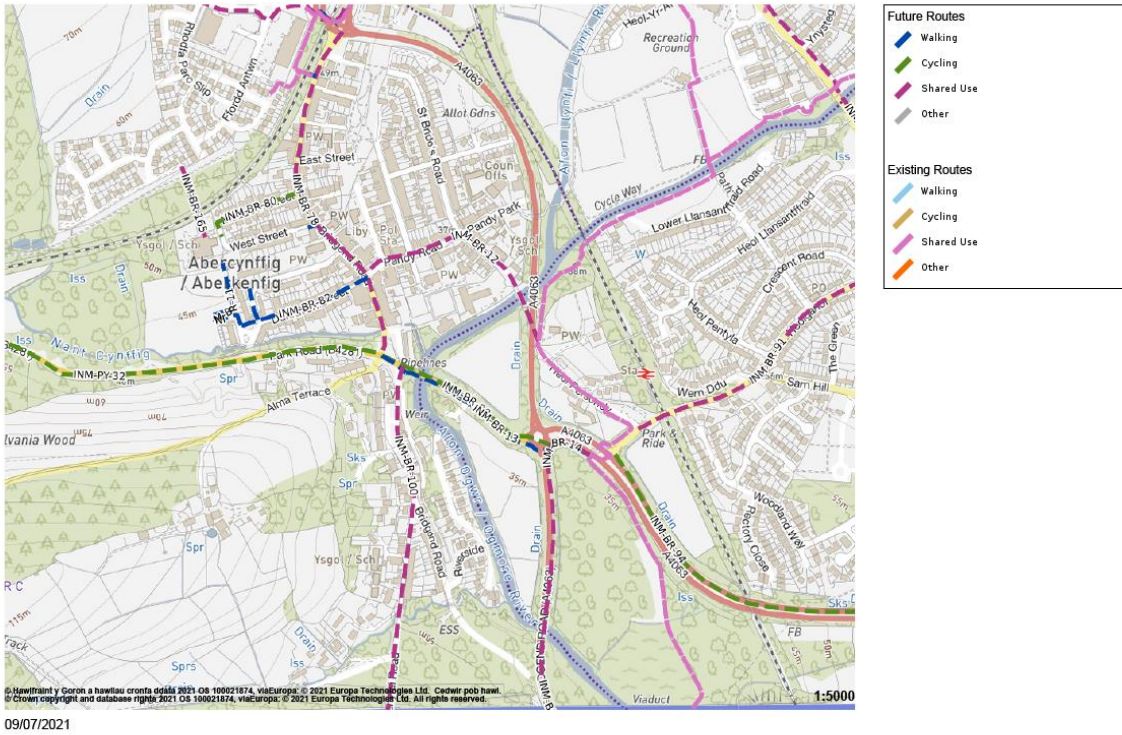
Bridgend North Existing and Future



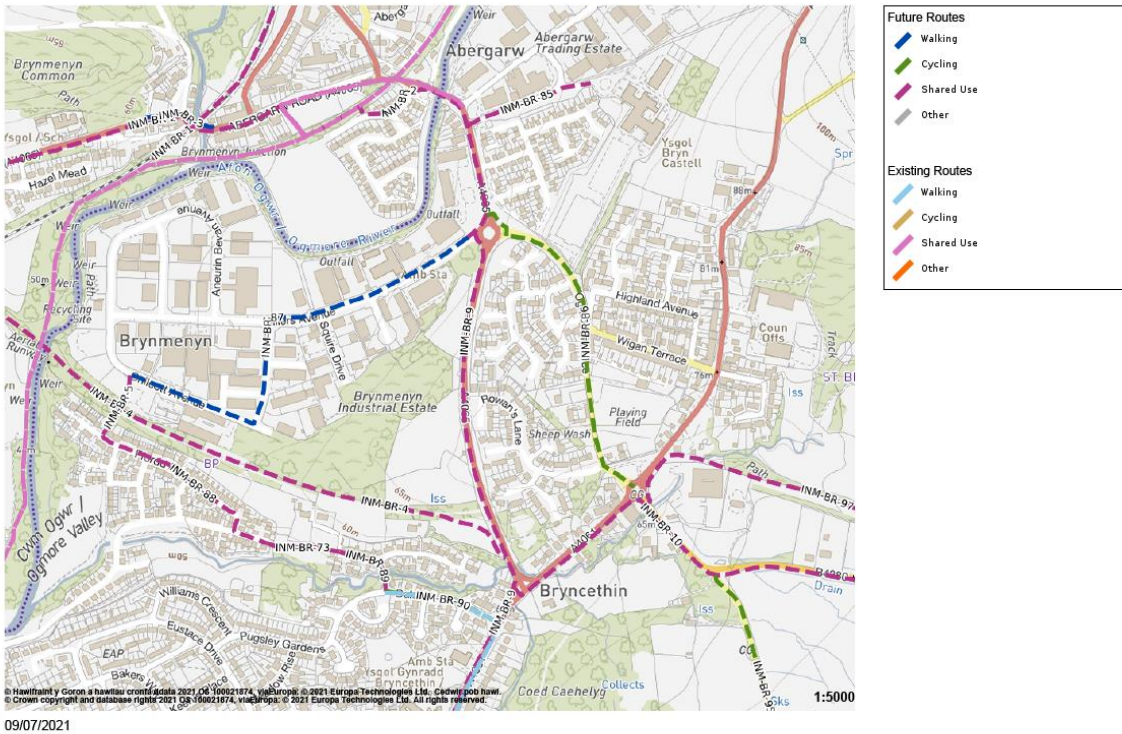
Bridgend West Existing and Future



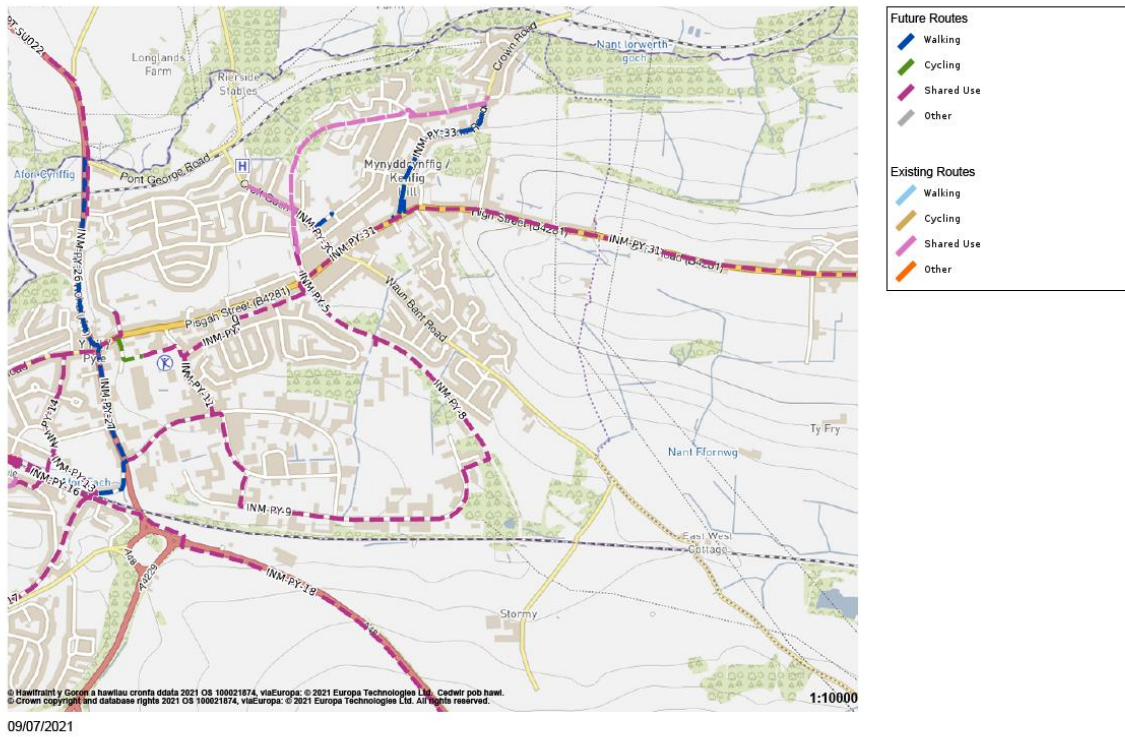
Aberkenfig Existing and Future



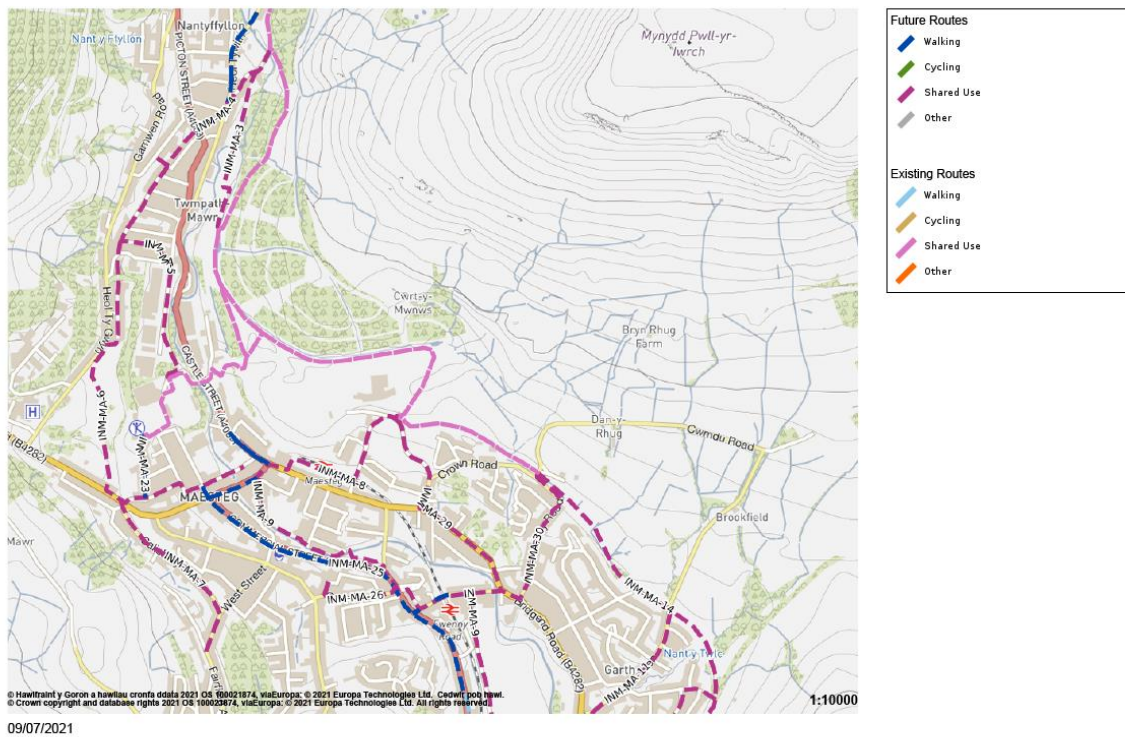
Brynmynyn Existing and Future



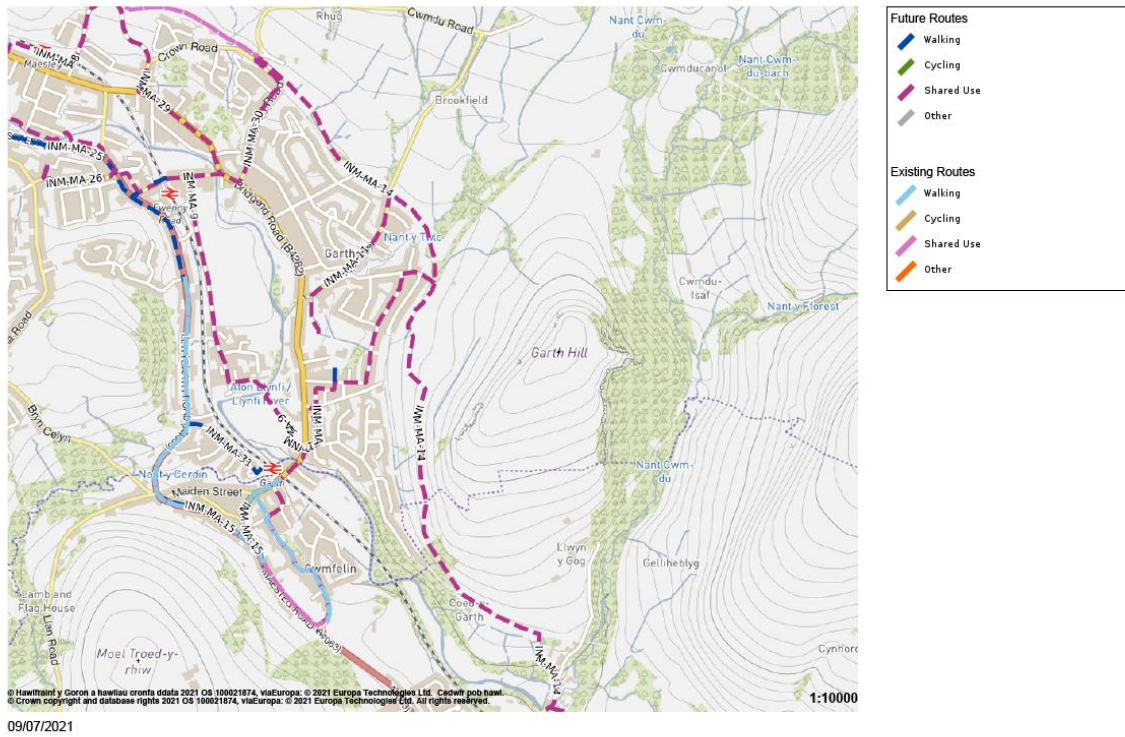
Kenfig Hill Existing and Future



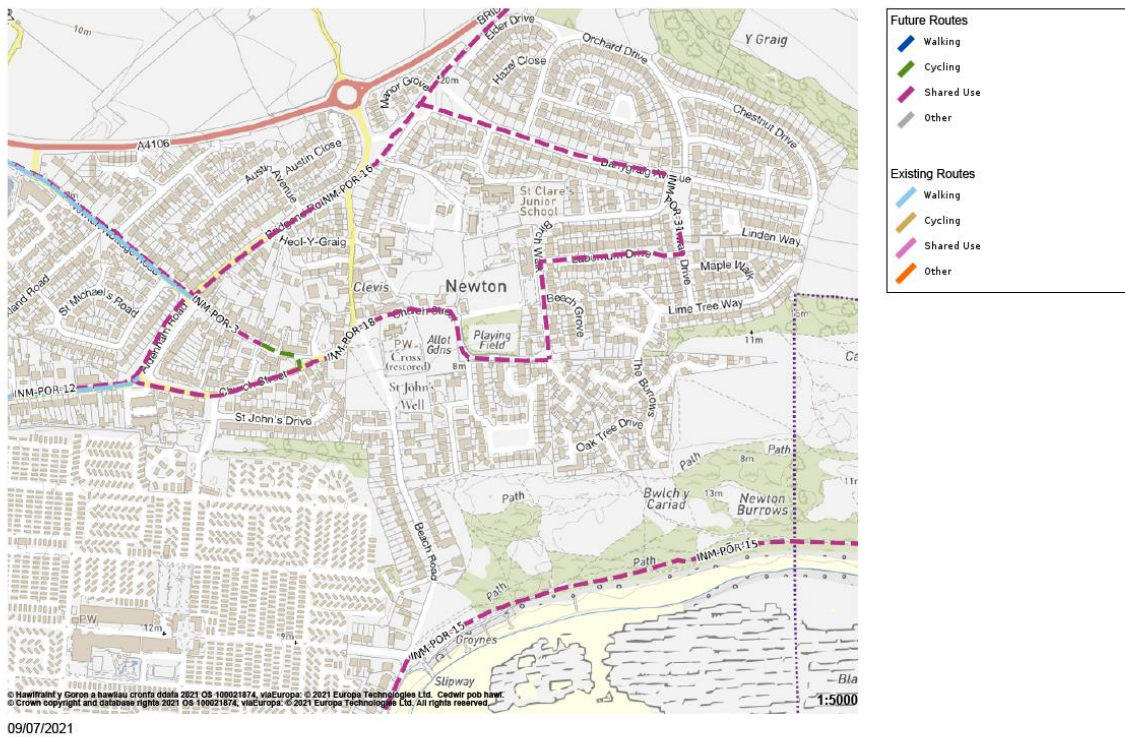
Maesteg North Existing and Future



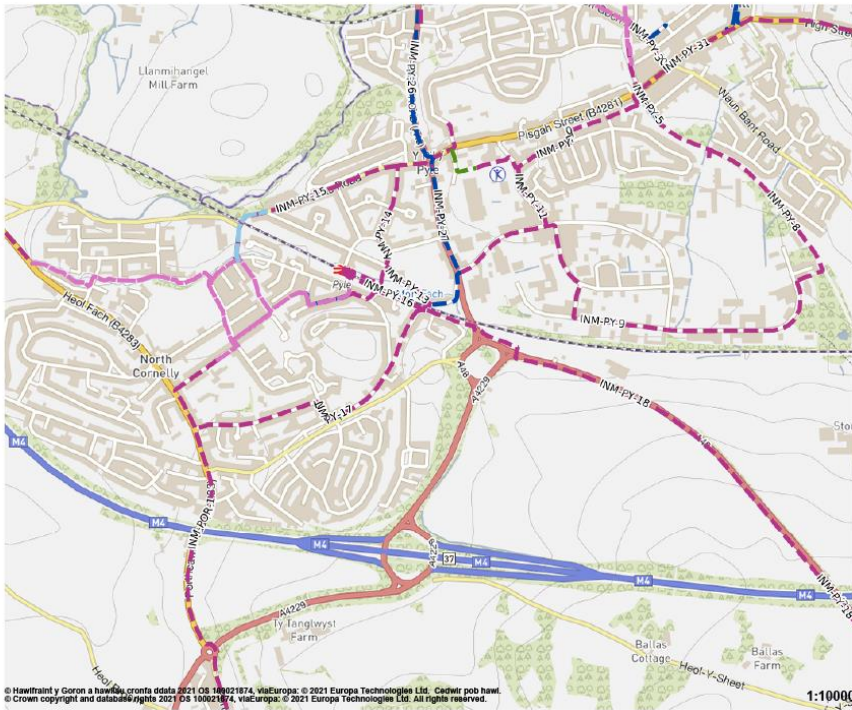
Maesteg South Existing and Future



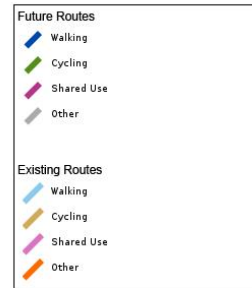
Newton Existing and Future



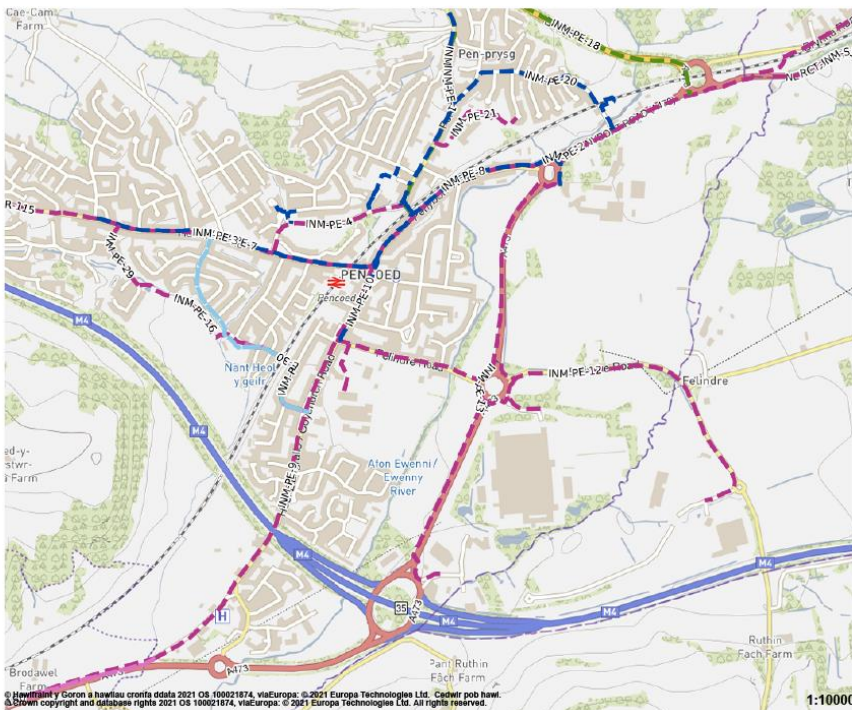
North Cornelly Existing and Future



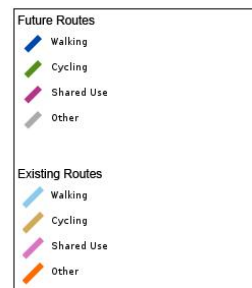
09/07/2021



Pencoed Existing and Future



09/07/2021

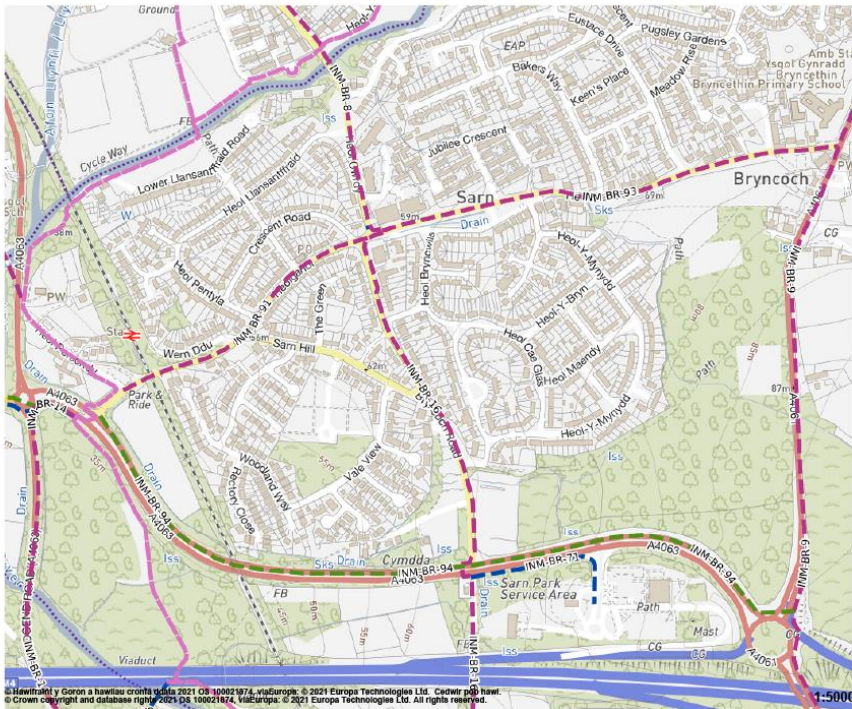


Porthcawl Existing and Future



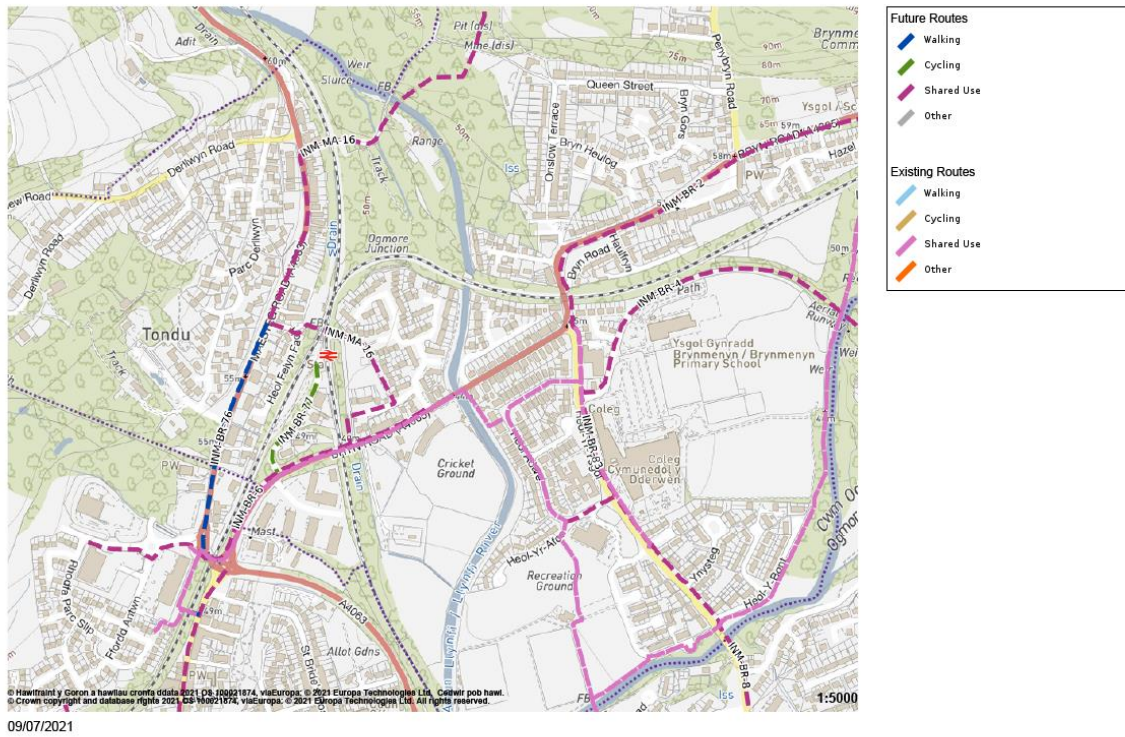
09/07/2021

Sarn Existing and Future



09/07/2021

Tondu Existing and Future



Appendix A: Route Naming Schedule

Route Name	Route Type	Route Classification	Priority
INM-BE-1	walking	local	high
INM-BE-2	shared_use	local	high
INM-BE-3	cycling	primary	high
INM-BR-1	shared_use	local	med
INM-BR-2	shared_use	local	high
INM-BR-3	walking	local	med
INM-BR-4	shared_use	local	high
INM-BR-5	shared_use	local	med
INM-BR-6	shared_use	local	high
INM-BR-7	walking	local	med
INM-BR-8	shared_use	local	high
INM-BR-9	shared_use	local	high
INM-BR-10	shared_use	local	high
INM-BR-11	walking	local	high
INM-BR-12	shared_use	local	high
INM-BR-13	walking	local	high
INM-BR-14	shared_use	local	high
INM-BR-15	walking	local	med
INM-BR-16	shared_use	local	high
INM-BR-17	walking	local	low
INM-BR-18	shared_use	local	high
INM-BR-19	walking	local	med
INM-BR-20	shared_use	local	med
INM-BR-21	walking	local	med
INM-BR-22	shared_use	local	high
INM-BR-23	walking	local	high
INM-BR-24	shared_use	local	high
INM-BR-25	shared_use	local	med
INM-BR-26	walking	local	med
INM-BR-27	shared_use	local	high
INM-BR-28	shared_use	local	high
INM-BR-29	shared_use	local	med
INM-BR-30	shared_use	local	low
INM-BR-31	shared_use	local	med
INM-BR-32	shared_use	local	high
INM-BR-33	shared_use	local	med
INM-BR-34	shared_use	local	med
INM-BR-35	walking	local	med
INM-BR-36	shared_use	local	med
INM-BR-37	shared_use	local	med
INM-BR-38	shared_use	local	low
INM-BR-39	shared_use	local	high
INM-BR-40	walking	local	high
INM-BR-41	shared_use	local	high
INM-BR-42	walking	local	high

INM-BR-43	shared_use	local	high
INM-BR-44	shared_use	local	high
INM-BR-44	shared_use	local	high
INM-BR-45	shared_use	local	med
INM-BR-46	shared_use	local	high
INM-BR-47	shared_use	local	high
INM-BR-48	shared_use	local	high
INM-BR-49	shared_use	local	med
INM-BR-50	shared_use	local	med
INM-BR-51	shared_use	local	high
INM-BR-51	shared_use	local	high
INM-BR-52	shared_use	local	high
INM-BR-53	walking	local	med
INM-BR-54	shared_use	local	high
INM-BR-55	shared_use	local	high
INM-BR-56	shared_use	local	high
INM-BR-57	shared_use	local	high
INM-BR-58	shared_use	local	med
INM-BR-59	walking	local	med
INM-BR-60	walking	local	med
INM-BR-61	walking	local	med
INM-BR-62	walking	local	med
INM-BR-63	walking	local	med
INM-BR-64	walking	local	med
INM-BR-65	walking	local	high
INM-BR-66	walking	local	high
INM-BR-67	walking	local	high
INM-BR-68	walking	local	med
INM-BR-69	shared_use	local	med
INM-BR-70	walking	local	low
INM-BR-71	walking	local	low
INM-BR-72	walking	local	med
INM-BR-73	shared_use	local	high
INM-BR-74	walking	local	high
INM-BR-75	walking	local	med
INM-BR-76	walking	secondary	high
INM-BR-77	cycling	secondary	high
INM-BR-78	shared_use	primary	high
INM-BR-79	walking	secondary	high
INM-BR-80	cycling	secondary	high
INM-BR-81	walking	secondary	high
INM-BR-82	walking	secondary	high
INM-BR-83	shared_use	primary	high
INM-BR-84	shared_use	secondary	high
INM-BR-85	shared_use	secondary	high
INM-BR-86	cycling	secondary	high
INM-BR-87	walking	secondary	high
INM-BR-88	shared_use	local	high
INM-BR-89	shared_use	local	high

INM-BR-90	cycling	local	high
INM-BR-91	shared_use	primary	high
INM-BR-92	walking	primary	med
INM-BR-93	shared_use	primary	high
INM-BR-94	cycling	secondary	high
INM-BR-95	cycling	secondary	med
INM-BR-96	walking	local	med
INM-BR-97	shared_use	primary	med
INM-BR-98	cycling	secondary	high
INM-BR-99	walking	secondary	high
INM-BR-100	shared_use	primary	high
INM-BR-101	shared_use	primary	med
INM-BR-102	walking	secondary	med
INM-BR-103	cycling	primary	med
INM-BR-104	shared_use	secondary	med
INM-BR-105	shared_use	secondary	low
INM-BR-106	walking	local	low
INM-BR-107	walking	local	low
INM-BR-108	shared_use	primary	low
INM-BR-109	shared_use	secondary	low
INM-BR-110	cycling	secondary	med
INM-BR-111	shared_use	secondary	med
INM-BR-112	cycling	secondary	low
INM-BR-113	shared_use	primary	low
INM-BR-114	shared_use	primary	low
INM-BR-115	shared_use	primary	med
INM-BR-116	walking	secondary	med
INM-BR-117	walking	local	med
INM-BR-118	walking	secondary	med
INM-BR-119	walking	local	med
INM-BR-120	shared_use	local	high
INM-BR-121	shared_use	primary	med
INM-BR-122	shared_use	secondary	high
INM-BR-123	walking	local	med
INM-BR-124	cycling	secondary	low
INM-BR-125	cycling	secondary	med
INM-BR-126	cycling	primary	med
INM-BR-127	shared_use	primary	med
INM-BR-128	shared_use	primary	low
INM-BR-129	shared_use	secondary	high
INM-BR-130	shared_use	secondary	high
INM-BR-131	shared_use	secondary	high
INM-BR-132	shared_use	secondary	med
INM-BR-133	shared_use	secondary	med
INM-BR-134	shared_use	local	low
INM-BR-135	shared_use	primary	low
INM-BR-136	cycling	secondary	low
INM-BR-137	shared_use	secondary	med
INM-BR-138	shared_use	local	low

INM-BR-139	shared_use	secondary	low
INM-BR-140	shared_use	secondary	low
INM-BR-141	cycling	secondary	med
INM-BR-142	shared_use	secondary	low
INM-BR-143	shared_use	secondary	low
INM-BR-144	shared_use	secondary	low
INM-BR-145	shared_use	secondary	low
INM-BR-146	shared_use	secondary	med
INM-BR-147	shared_use	local	low
INM-BR-148	shared_use	secondary	low
INM-BR-149	cycling	primary	med
INM-BR-150	shared_use	primary	med
INM-BR-151	cycling	primary	low
INM-BR-152	cycling	secondary	med
INM-BR-153	walking	local	med
INM-BR-154	walking	secondary	high
INM-BR-155	walking	secondary	high
INM-BR-156	walking	secondary	high
INM-BR-157	shared_use	secondary	high
INM-BR-158	shared_use	secondary	high
INM-BR-159	walking	secondary	high
INM-BR-160	shared_use	local	high
INM-BR-161	shared_use	secondary	high
INM-BR-162	shared_use	primary	high
INM-BR-163	walking	secondary	high
INM-BR-164	shared_use	secondary	high
INM-BR-165	shared_use	secondary	high
INM-BR-166	walking	local	high
INM-GG-1	walking	local	med
INM-GG-2	walking	local	med
INM-MA-1	shared_use	local	med
INM-MA-2	walking	local	med
INM-MA-3	shared_use	local	med
INM-MA-4	shared_use	local	med
INM-MA-5	shared_use	local	high
INM-MA-6	shared_use	local	high
INM-MA-7	shared_use	local	high
INM-MA-8	shared_use	local	high
INM-MA-9	shared_use	local	high
INM-MA-10	walking	local	high
INM-MA-11	shared_use	local	high
INM-MA-12	walking	local	med
INM-MA-13	shared_use	local	high
INM-MA-14	shared_use	local	high
INM-MA-15	walking	local	med
INM-MA-15	walking	local	med
INM-MA-16	shared_use	local	high
INM-MA-17	shared_use	local	low
INM-MA-18	walking	local	low

INM-MA-19	walking	local	med
INM-MA-20	walking	local	med
INM-MA-21	walking	local	med
INM-MA-22	walking	secondary	med
INM-MA-23	walking	secondary	high
INM-MA-24	shared_use	secondary	high
INM-MA-25	walking	local	high
INM-MA-26	shared_use	secondary	high
INM-MA-27	walking	secondary	high
INM-MA-28	walking	primary	high
INM-MA-29	shared_use	primary	high
INM-MA-30	shared_use	secondary	high
INM-MA-31	walking	secondary	high
INM-MA-32	walking	secondary	med
INM-MA-33	walking	primary	high
INM-MA-34	walking	secondary	low
INM-MA-35	cycling	secondary	low
INM-MA-36	shared_use	secondary	low
INM-OG-1	walking	local	med
INM-OG-2	cycling	local	high
INM-OG-3	walking	local	high
INM-OG-4	walking	local	med
INM-OG-5	shared_use	local	med
INM-OG-6	walking	local	low
INM-OG-7	shared_use	local	med
INM-OG-8	shared_use	local	high
INM-OG-9	walking	local	med
INM-OG-10	walking	local	med
INM-OG-11	walking	local	low
INM-OG-12	shared_use	local	med
INM-OG-13	shared_use	local	med
INM-OG-14	shared_use	local	med
INM-OG-15	cycling	secondary	med
INM-OG-16	shared_use	local	med
INM-OG-17	cycling	primary	med
INM-OG-18	walking	secondary	med
INM-OG-19	cycling	primary	med
INM-OG-20	shared_use	primary	low
INM-PE-1	cycling	local	high
INM-PE-2	shared_use	local	high
INM-PE-3	shared_use	local	high
INM-PE-4	shared_use	local	high
INM-PE-5	walking	local	med
INM-PE-5	walking	local	med
INM-PE-6	walking	local	high
INM-PE-7	walking	local	high
INM-PE-8	walking	local	high
INM-PE-9	shared_use	local	high
INM-PE-10	walking	local	high

INM-PE-11	shared_use	local	high
INM-PE-12	shared_use	local	high
INM-PE-12	shared_use	local	high
INM-PE-13	shared_use	local	high
INM-PE-14	walking	local	high
INM-PE-15	walking	local	med
INM-PE-16	shared_use	local	high
INM-PE-17	walking	local	high
INM-PE-18	cycling	secondary	med
INM-PE-19	walking	primary	high
INM-PE-20	walking	secondary	high
INM-PE-21	shared_use	secondary	med
INM-PE-22	shared_use	secondary	med
INM-PE-23	walking	secondary	high
INM-PE-24	walking	secondary	high
INM-PE-25	walking	secondary	high
INM-PE-26	shared_use	secondary	high
INM-PE-27	walking	secondary	high
INM-PE-28	walking	secondary	high
INM-PE-29	shared_use	local	med
INM-PE-30	cycling	local	high
INM-PO-1	shared_use	local	med
INM-PO-2	walking	local	med
INM-PO-3	shared_use	local	med
INM-PO-4	walking	local	high
INM-PO-5	walking	local	high
INM-PO-6	walking	local	high
INM-PO-7	walking	local	med
INM-PO-8	walking	primary	med
INM-PO-9	walking	local	med
INM-PO-10	walking	local	med
INM-PO-11	cycling	local	med
INM-PO-12	walking	secondary	high
INM-PO-13	walking	primary	high
INM-POR-1	shared_use	local	high
INM-POR-2	shared_use	local	med
INM-POR-3	shared_use	local	med
INM-POR-4	walking	local	med
INM-POR-5	shared_use	local	med
INM-POR-6	walking	local	high
INM-POR-7	walking	local	low
INM-POR-8	shared_use	local	high
INM-POR-9	walking	local	med
INM-POR-10	shared_use	local	high
INM-POR-11	walking	local	high
INM-POR-11	walking	local	high
INM-POR-12	shared_use	local	high
INM-POR-12	shared_use	local	high
INM-POR-13	shared_use	local	high

INM-POR-14	shared_use	local	high
INM-POR-15	shared_use	local	med
INM-POR-16	shared_use	local	med
INM-POR-17	shared_use	local	med
INM-POR-18	shared_use	local	med
INM-POR-19	shared_use	secondary	low
INM-POR-20	cycling	secondary	low
INM-POR-21	cycling	secondary	med
INM-POR-22	walking	primary	high
INM-POR-23	walking	secondary	high
INM-POR-24	shared_use	secondary	high
INM-POR-25	cycling	secondary	med
INM-POR-26	shared_use	primary	high
INM-POR-27	cycling	secondary	high
INM-POR-28	walking	secondary	high
INM-POR-29	cycling	secondary	med
INM-POR-30	cycling	local	med
INM-POR-31	shared_use	secondary	med
INM-PY-1	walking	local	med
INM-PY-2	walking	local	med
INM-PY-3	walking	local	med
INM-PY-4	walking	local	med
INM-PY-5	shared_use	local	high
INM-PY-6	walking	local	high
INM-PY-7	walking	local	high
INM-PY-8	shared_use	local	med
INM-PY-9	shared_use	local	med
INM-PY-10	shared_use	local	high
INM-PY-11	shared_use	local	high
INM-PY-12	walking	local	med
INM-PY-13	shared_use	local	high
INM-PY-14	shared_use	local	high
INM-PY-15	shared_use	local	high
INM-PY-16	shared_use	local	high
INM-PY-16	shared_use	local	high
INM-PY-17	shared_use	local	high
INM-PY-18	shared_use	local	med
INM-PY-19	walking	local	med
INM-PY-20	walking	local	high
INM-PY-21	shared_use	local	med
INM-PY-22	shared_use	local	high
INM-PY-23	walking	local	high
INM-PY-24	shared_use	secondary	med
INM-PY-25	cycling	secondary	med
INM-PY-26	walking	primary	med
INM-PY-27	walking	primary	med
INM-PY-29	shared_use	secondary	high
INM-PY-30	shared_use	secondary	high
INM-PY-31	shared_use	primary	high

INM-PY-32	cycling	secondary	high
INM-PY-33	walking	secondary	med

Appendix B: Audit Scores (Existing Routes)

For a route to be included as 'Existing' it must score at least 70% with no scoring elements marked as 'Critical' (which relate to pedestrians if there is a missing drop kerb, thus restricting wheelchair or mobility scooter users) or for cyclists if the route is not an acceptable width, or if on carriageway cycling if traffic flows/speeds are too high.

Welsh Government route audit tools have been used to determine the scores along each section, and are available via this link: <https://gov.wales/active-travel-guidance>.

Route ID:	Route Name	Settlement	Walk Score (%)	Cycle Score (%)
BRC1	Tondu to NCN4	Bridgend	95	84
BRC1	Tondu to NCN4	Bridgend	75	60
BRC2	Ynysawdre to NCN4	Bridgend	85	84
BRC2	Ynysawdre to NCN4	Bridgend	85	72
BRC2	Ynysawdre to NCN4	Bridgend	88	70
BRC3	NCN 4 Celtic Trail	Bridgend	85	66
BRC3	NCN4 Celtic Trail	Bridgend	88	88
BRC4	NCN 4 Blackmill to Tondu	Bridgend	93	78
BRC5a	NCN885 Sarn to Bridgend	Bridgend	62	65
BRC5b	NCN885 Sarn to Bridgend	Bridgend	58	68
BRC5c	NCN885 Sarn to Bridgend	Bridgend	75	70
BRC5d	NCN885 Sarn to Bridgend	Bridgend	48	64
BRC5e	NCN885 Sarn to Bridgend	Bridgend	100	78
BRC5f	NCN 885 Sarn to Bridgend	Bridgend	93	70
BRC5g	NCN885 Sarn to Bridgend	Bridgend	88	76
BRC5h	NCN 885 Sarn to Bridgend	Bridgend	85	86
BRC5i	NCN 885 Sarn to Bridgend	Bridgend	85	86
BRC6a	Litchard to Brackla via Coity	Bridgend	93	82
BRC6b	Litchard to Brackla via Coity	Bridgend	93	84
BRC6c	Litchard to Brackla via Coity	Bridgend	88	84
BRC7a	Brackla to Bridgend town centre	Bridgend	90	80
BRC7b	Brackla to Bridgend town centre	Bridgend	90	74
BRC7c	Brackla to Bridgend town centre	Bridgend	93	82
BRC7d	Brackla to Bridgend town centre	Bridgend	85	70
BRC7e	Brackla to Bridgend town centre	Bridgend	80	82
BRC8a	Laleston to Bridgend town centre	Bridgend	88	82
BRC8b	Laleston to Bridgend town centre	Bridgend	80	80
BRC8c	Laleston to Bridgend town centre	Bridgend	98	88
BRC8d	Laleston to Bridgend town centre	Bridgend	98	88
BRC9a	Laleston to Bridgend town centre	Bridgend	83	76
BRC9b	Laleston to Bridgend town centre	Bridgend	78	74

BRC10	Cefn Glas to Bridgend town centre	Bridgend	93	84
BRC11	Coychurch Village to Coychurch Primary School	Bridgend	93	78
BRC12	Coleg-y-Dderwen to NCN 4 Link	Bridgend	93	88
BRC13	Waterton Industrial Estate Link	Bridgend	88	80
BRP1	Coity to Brackla	Bridgend	73	0
BRP2	Brackla to Bridgend College	Bridgend	68	0
BRP3	Brackla to Brynteg Comprehensive School	Bridgend	83	0
BRP4	Ewenny Cross to Bridgend town centre	Bridgend	68	0
BRP5	Litchard to Bridgend Designer Outlet	Bridgend	60	0
BRP6	Litchard to Brackla Industrial Estate	Bridgend	75	0
BRP6b	Litchard Cross to Litchard Primary School	Bridgend	73	0
BRP7	Coychurch Road, Bridgend	Bridgend	75	0
BRP8	Main Road, Coychurch	Bridgend	80	0
BRP9	Bryncoch to Bryncethin Primary School	Bridgend	75	0
BRP10	Wildmill to Litchard Primary School	Bridgend	0	0
BRP11	Pendre to Litchard Primary School	Bridgend	85	0
BRP12	Bridgend Town Centre	Bridgend	88	0
MAC1a	Llynfi Valley Route	Maesteg	88	74
MAC1b	Llynfi Valley Route	Maesteg	85	72
MAC1c	Llynfi Valley Route	Maesteg	90	80
MAC2	Llynfi Valley Route	Maesteg	85	70
MAC3a	Llynfi Valley Route	Maesteg	90	84
MAC3b	Llynfi Valley Route	Maesteg	95	88
MAC4	Cwmfelin Primary School Link	Maesteg	98	80
MAP1a	Garth Station to Cwmfelin Primary School	Maesteg	73	0
MAP1b	Garth station to Cwmfeling Primary School	Maesteg	85	0
MAP2	Maesteg to Cwmfelin Primary School	Maesteg	70	0
OVC	Ogmore Valley Route	Ogmore Vale	85	70
OVC2	Ogmore Valley Route	Ogmore Vale	78	76
OVC3	Ogmore Valley Route	Ogmore Vale	88	80
PEC1	Coychurch to Pencoed (ATN Route 2)	Pencoed	83	84
PEC2	Hendre to Pencoed Comprehensive and Croesty Primary Schools	Pencoed	93	76
PEP1	Hendre Road to Pencoed Comprehensive School	Pencoed	75	0

POC1	Garw Valley Route	Pontycymer	90	76
POC2	Garw Valley Route	Pontycymer	68	60
PORC1a	Rest Bay to Porthcawl	Porthcawl	93	82
PORC1b	Nottage to Rest Bay	Porthcawl	53	66
PORC1c	Nottage to Rest Bay	Porthcawl	83	72
PORC1d	Nottage to Rest Bay	Porthcawl	90	66
PORC2a	Porthcawl Primary School Link	Porthcawl	100	90
PORC2b	Porthcawl Primary School Link	Porthcawl	94	90
PORC2c	Porthcawl Primary School Link	Porthcawl	98	90
PORC3	Rest Bay to Coney Beach	Porthcawl	88	78
PORP1	Nottage to Porthcawl Comprehensive School	Porthcawl	71	0
PORP2	Porthcawl to Rest Bay	Porthcawl	85	0
PORP3	Porthcawl to Newton	Porthcawl	76	0
PORP4	Rest Bay to Nottage	Porthcawl	70	0
PORP5	West Road Route	Porthcawl	70	0
PORP6	Newton to Porthcawl Primary School	Porthcawl	78	0
PYC1a	Cornelly to Pyle Railway Station	Pyle	100	93
PYC1b	Cornelly to Pyle Railway Station	Pyle	75	68
PYC2a	Corneli Primary School Safe Routes	Pyle	100	93
PYC2b	Corneli Primary School Safe Routes	Pyle	50	82
PYC3a	Kenfig Hill to Cynffig Comprehensive	Pyle	85	74
PYC3b	Kenfig Hill to Cynffig Comprehensive	Pyle	88	78
PYC3c	Kenfig Hill to Cynffig Comprehensive School	Pyle	80	66
PYC3d	Kenfig Hill to Cynffig Comprehensive School	Pyle	90	76
PYP1	Pyle to North Cornelly	Pyle	78	0

Appendix C: Stakeholder List and Engagement Activities

Stakeholder	Group	Phase 1	Phase 2	Form of Engagement
Public Rights of Way Team	BCBC	✓	✓	email campaign
Planning Development Section	BCBC	✓	✓	email campaign
Highways Maintenance Section	BCBC	✓	✓	email campaign
Road Safety Team	BCBC	✓	✓	email campaign
WG Network Management officers for Active Travel on Trunk Roads	BCBC	✓	✓	email campaign
Trunk Road Agent officers for area	BCBC	✓	✓	email campaign
Trunk Road Agent officers for area	BCBC	✓	✓	email campaign
Trunk Road Agent officers for area	BCBC	✓	✓	email campaign
Adjoining Local Authorities	BCBC	✓	✓	email campaign
Education Section	BCBC	✓	✓	email campaign
Traffic Management and Parking Section	BCBC	✓	✓	email campaign
Strategic Planning Section	BCBC	✓	✓	email campaign
Development Control Section	BCBC	✓	✓	email campaign
Regeneration and Economic Development Section	BCBC	✓	✓	email campaign
Highways Section	BCBC	✓	✓	email campaign
Physical Activity and Sport Service	BCBC	✓	✓	email campaign
Cabinet Member for Adult Social Care, Health and Wellbeing	BCBC	✓	✓	email campaign
Local Access Group (LAG)	BCBC	✓	✓	email campaign
Local Access Forum/ Countryside and Wildlife Team	BCBC	✓	✓	email campaign
Community Cohesion Officer	BCBC	✓	✓	email campaign
Elected Members (52)	Elected Members	✓	✓	email campaign stakeholder webinar
Community/Town Council Clerks (20)	Community/Town Councils	✓	✓	email campaign stakeholder webinar
Focus Area Maesteg (500 households)	Residents		✓	leaflet drop
Focus Area Ogmore Vale (500 households)	Residents		✓	leaflet drop
Focus Area Pontycymer (500 households)	Residents		✓	leaflet drop
Focus Area Pyle (500 households)	Residents		✓	leaflet drop

Protected Characteristics				
Age connects Morgannwg	Age	✓	✓	email campaign
Shout Bridgend	Age	✓	✓	email campaign
Age Cymru Glamorgan	Age	✓	✓	email campaign
Older people's commissioner for Wales	Age	✓	✓	email campaign
Stroke Association Bridgend	Disability	✓	✓	email campaign
National Autistic Society Bridgend	Disability	✓	✓	email campaign
All Wales Forum Parents & Carers	Disability	✓	✓	email campaign
Disability Wales	Disability	✓	✓	email campaign
Integrated Autism Service	Disability	✓	✓	email campaign
Wales Council for Deaf People	Disability	✓	✓	email campaign
Bridgend Coalition of Disabled People	Disability	✓	✓	email campaign
Care and Repair Bridgend	Disability	✓	✓	email campaign
AutSide Education and Training	Disability	✓	✓	email campaign
Special Olympics Wales	Disability	✓	✓	email campaign
Disability Wales	Disability	✓	✓	email campaign
RNIB	Disability	✓	✓	email campaign/ meeting
Welsh Guide Dogs	Disability	✓	✓	email campaign/ meeting
Wales Vision Forum	Disability	✓	✓	email campaign/ liaising through RNIB
Welsh Council of the Blind	Disability	✓	✓	email campaign/ liaising through RNIB
Leonard Cheshire	Disability	✓	✓	email campaign
Care Council Wales	Disability	✓	✓	email campaign
Carers Trust in Wales	Disability	✓	✓	email campaign

Disability Wales	Disability	✓	✓	email campaign
Epilepsy Wales	Disability	✓	✓	email campaign
Race Council Cymru	Diversity	✓	✓	email campaign
Stonewall Cymru	Diversity	✓	✓	email campaign
FAN Group (Bridgend among others)	Diversity	✓	✓	email campaign
Cangen Merched y Wawr Y Bontfaen	Gender	✓	✓	email campaign
WI Bryncethin	Gender	✓	✓	email campaign
Breeze Bridgend	Gender/ Walking & Cycling	✓	✓	email campaign
Mind Cwm taf Morgannwg	Health	✓	✓	email campaign
Hafal Bridgend	Health	✓	✓	email campaign
Wales Council for Voluntary Action	Other	✓	✓	email campaign
Bridgend Association of Voluntary Organisations	Other	✓	✓	email campaign
Refugee Council	Other	✓	✓	email campaign
Bridgend College	Young People	✓	✓	email campaign/ direct liaising
Family Information Service	Young People	✓	✓	email campaign/ direct liaising
Scouts Bridgend	Young People	✓	✓	email campaign
Yr Urdd	Young People	✓	✓	email campaign
Children's commissioner for Wales	Young People	✓	✓	email campaign/ direct liaising
Youth Parliament	Young People	✓	✓	email campaign/ direct liaising
The Bridge Alternative Provision	Young People	✓	✓	email campaign
Infants School, all (2)	Young People	✓	✓	email campaign/ Online survey for schools

Junior School, all (1)	Young People	✓	✓	email campaign/ Online survey for schools
Primary Schools, all (40)	Young People	✓	✓	email campaign/ Online survey for schools
Secondary Schools, all (8)	Young People	✓	✓	email campaign/ Online survey for schools
Secondary Schools, all (8)	Young People	✓	✓	email campaign/ Online survey for schools
Church Schools, all (6)	Young People	✓	✓	email campaign/ Online survey for schools
Special Schools all (2)	Young People	✓	✓	email campaign/ Online survey for schools
Groups/ Organisations/ Businesses				
3M Healthcare Ltd	Business	✓	✓	email campaign
Aircraft Maintenance Support Services Ltd	Business	✓	✓	email campaign
Arjo Huntleigh	Business	✓	✓	email campaign
Astra Games Ltd	Business	✓	✓	email campaign
Biomonde	Business	✓	✓	email campaign
CGI	Business	✓	✓	email campaign
Cenin Limited	Business	✓	✓	email campaign
Centregreat	Business	✓	✓	email campaign
Coppice Alupack Ltd	Business	✓	✓	email campaign
Crendon	Business	✓	✓	email campaign
Days Healthcare	Business	✓	✓	email campaign
Dunraven manufacturing	Business	✓	✓	email campaign
Formation Furniture Ltd	Business	✓	✓	email campaign

GE Carpentry Services Ltd	Business	✓	✓	email campaign
Invacare UK	Business	✓	✓	email campaign
Irvin GQ	Business	✓	✓	email campaign
John Raymond Transport	Business	✓	✓	email campaign
Knott-Avonride Ltd	Business	✓	✓	email campaign
McArthurGlen Bridgend Designer Outlet	Business	✓	✓	email campaign
Morris Line Engineering	Business	✓	✓	email campaign
Nodor International	Business	✓	✓	email campaign
Ortho-Clinical Diagnostics	Business	✓	✓	email campaign
Owens Group Ltd	Business	✓	✓	email campaign
PCI Pharma Services	Business	✓	✓	email campaign
ReNeuron	Business	✓	✓	email campaign
Rockwool	Business	✓	✓	email campaign
Roma Medical	Business	✓	✓	email campaign
Ruskinn Technology Ltd	Business	✓	✓	email campaign
SAS International	Business	✓	✓	email campaign
Sony Manufacturing Company	Business	✓	✓	email campaign
Spectrum Technologies PLC	Business	✓	✓	email campaign
Tyco Water Works Atlantic Plastics Ltd	Business	✓	✓	email campaign
Wepa UK	Business	✓	✓	email campaign
Zi+A27:A61mmer Biomet	Business	✓	✓	email campaign
Bridgend Cycle Centre	Cycle Shop	✓	✓	email campaign
Rush Cycles	Cycle Shop	✓	✓	email campaign
Bike It	Cycle Shop	✓	✓	email campaign
Bridgend Bike Repairs	Cycle Shop	✓	✓	email campaign
ONIT Sports	Cycle Shop	✓	✓	email campaign
The Wildlife Trust East and West Wales	Environment	✓	✓	email campaign
Woodland Trust Wales/ Coed Cadw	Environment	✓	✓	email campaign

Bryngarw Park Countryside Volunteers	Environment	✓	✓	email campaign
BCBC Biodiversity Policy Officer	Environment	✓	✓	email campaign
Buglife	Environment	✓	✓	email campaign
Project Splatter	Environment	✓	✓	email campaign
Princess of Wales Hospital	Health	✓	✓	email campaign
Health Challenge Wales	Health	✓	✓	email campaign
Planet Health Cymru/ Institute of Welsh Affairs	Health	✓	✓	email campaign
Ashfield Surgery	Health	✓	✓	letter & poster
Riversdale Surgery	Health	✓	✓	letter & poster
Newcastle Surgery	Health	✓	✓	letter & poster
Oak Tree Surgery	Health	✓	✓	letter & poster
Tynycoed Surgery	Health	✓	✓	letter & poster
Bridgend Clinic	Health	✓	✓	letter & poster
New Street Surgery	Health	✓	✓	letter & poster
Heathbridge House Surgery	Health	✓	✓	letter & poster
North Cornelly Surgery	Health	✓	✓	letter & poster
Porthcawl Group Practice	Health	✓	✓	letter & poster
Valleys to Coast	Housing	✓	✓	email campaign
Wales and West	Housing	✓	✓	email campaign
Hafod	Housing	✓	✓	email campaign
Linc-Cymru	Housing	✓	✓	email campaign
Dunraven Place Post Office	Public Bodies	✓	✓	letter & poster
Brackla Post Office	Public Bodies	✓	✓	letter & poster
Bridgend Industrial Estate Post Office	Public Bodies	✓	✓	letter & poster
Cefn Glas Post Office	Public Bodies	✓	✓	letter & poster
Pendre Post Office	Public Bodies	✓	✓	letter & poster
Bryntirion Post Office	Public Bodies	✓	✓	letter & poster
Coity Post Office	Public Bodies	✓	✓	letter & poster

Sarn Post Office	Public Bodies	✓	✓	letter & poster
Brynmenyn Post Office	Public Bodies	✓	✓	letter & poster
Pyle Post Office	Public Bodies	✓	✓	letter & poster
Simply Local Laleston	Public Bodies	✓	✓	letter & poster
Cefn Cribwr Post Office	Public Bodies	✓	✓	letter & poster
Pencoed Post Office	Public Bodies	✓	✓	letter & poster
Ogmore-by-Sea Post Office	Public Bodies	✓	✓	letter & poster
Kenfig Hill Post Office	Public Bodies	✓	✓	letter & poster
North Cornelly Post Office	Public Bodies	✓	✓	letter & poster
Royal Mail	Public Bodies	✓	✓	letter & poster
Saint Brides Major Post Office	Public Bodies	✓	✓	letter & poster
Blackmill Post Office	Public Bodies	✓	✓	letter & poster
Coytrahen Post Office	Public Bodies	✓	✓	letter & poster
Bridgend Library	Public Bodies	✓	✓	letter & poster
MPEC Library	Public Bodies	✓	✓	letter & poster
Aberkenfig Library	Public Bodies	✓	✓	letter & poster
Bridgend Library and Information Service	Public Bodies	✓	✓	letter & poster
Pencoed Library	Public Bodies	✓	✓	letter & poster
Pyle Life Centre	Public Bodies	✓	✓	letter & poster
Pontycymer Library at Halo Garw Valley Life Centre	Public Bodies	✓	✓	letter & poster
Sarn Library	Public Bodies	✓	✓	letter & poster
Porthcawl Library	Public Bodies	✓	✓	letter & poster
Cowbridge Library	Public Bodies	✓	✓	letter & poster
Learndirect - Bridgend College	Public Bodies	✓	✓	letter & poster
Halo Bridgend Life Centre	Sports	✓	✓	letter & poster
Jump Jam Trampoline Park Rock Climbinb Leisure Centre	Sports	✓	✓	letter & poster
Halo Garw Valley Life Centre	Sports	✓	✓	letter & poster
Physique Health & Leisure Ltd	Sports	✓	✓	letter & poster

Halo Pyle Swimming Pool	Sports	✓	✓	letter & poster
Halo Ogmore Valley Life Centre	Sports	✓	✓	letter & poster
Halo Ynysawdre Swimming Pool & Fitness Centre	Sports	✓	✓	letter & poster
Halo Pencoed Swimming Pool	Sports	✓	✓	letter & poster
Halo Maesteg Sports Centre	Sports	✓	✓	letter & poster
Cowbridge Leisure Centre	Sports	✓	✓	letter & poster
Nuffield Health Bridgend Fitness & Wellbeing	Sports	✓	✓	letter & poster
Energie Fitness Bridgend	Sports	✓	✓	letter & poster
Dynamic Strength and Fitness	Sports	✓	✓	letter & poster
Snap Fitness Bridgend	Sports	✓	✓	letter & poster
Heronston Hotel and Leisure Club	Sports	✓	✓	letter & poster
First Class	Sports	✓	✓	letter & poster
Community Transport Association (Wales)	Transport	✓	✓	Email campaign
Bus users Cymru	Transport	✓	✓	Email campaign
Confederation of Passenger Transport (Wales)	Transport	✓	✓	Email campaign
Transport Focus (Passenger Focus)	Transport	✓	✓	Email campaign
Campaign for Better Transport	Transport	✓	✓	Email campaign
Ramblers	Walking & Cycling	✓	✓	Email campaign
Ogmore Valley Wheelers	Walking & Cycling	✓	✓	Email campaign
Bridgend Social Cycling	Walking & Cycling	✓	✓	Email campaign
Bridgend and District Ramblers	Walking & Cycling	✓	✓	Email campaign
Cwm Ogwr Running Club	Walking & Cycling	✓	✓	Email campaign
Ogmore Valley Wheelers	Walking & Cycling	✓	✓	Email campaign
Ogmore Phoenix Runners	Walking & Cycling	✓	✓	Email campaign
Bridgend Athletic Club	Walking & Cycling	✓	✓	Email campaign
Brackla Harriers	Walking & Cycling	✓	✓	Email campaign
Bridgend Social Cycling	Walking & Cycling	✓	✓	Email campaign
South Wales Mountaineering Club	Walking & Cycling	✓	✓	Email campaign

Focused Engagement Phase 2	Group	Phase 1	Phase 2	Engagement Activity	Group actively promoting consultation
National groups					
Older People's Commissioner	Age	✓	✓	direct liaison	✓
Age Cymru	Age	✓	✓	personal email	
Disability Wales	Disability	✓	✓	personal email	
RNIB	Disability	✓	✓	direct liaison/ meetings	✓
Welsh Guide Dogs	Disability	✓	✓	direct liaison/ meetings	✓
Wales Council for the Blind	Disability	✓	✓	direct liaison	✓
Wales Vision Forum	Disability	✓	✓	direct liaison	✓
Leonard Cheshire	Disability	✓	✓	personal email	
Deafblind Cymru	Disability	✓	✓	direct liaison	<input type="checkbox"/>
Diverse Cymru	Diverse	✓	✓	direct liaison	✓
Ramblers Cymru	Walking & Cycling	✓	✓	direct liaison	✓
Living Streets Cymru	Walking & Cycling	✓	✓	direct liaison	✓
Future Generations Officer	Young People	✓	✓	direct liaison	✓
Children's Commissioner	Young People	✓	✓	direct liaison	✓
Council for Voluntary Youth Work	Young People	✓	✓	direct liaison	✓
Welsh Youth Parliament	Young People	✓	✓	direct liaison	<input type="checkbox"/>
WYP Vale Lleucu Haf William	Young People	✓	✓	personal email	
Children in Wales	Young People	✓	✓	personal email	
Local groups					
Age Cymru West Glamorgan	Age	✓	✓	personal email	
Ageing Well in Bridgend	Age	✓	✓	personal email	
U3A Bridgend	Age	✓	✓	personal email	✓

Age Cymru Bridgend SHOUT	Age	✓	✓	personal email	
African Community Centre	Diversity	✓	✓	personal email	<input type="checkbox"/>
Race Council Cymru	Diversity	✓	✓	personal email	✓
Ethnic Minorities and Youth Support Team Wales	Diversity	✓	✓	personal email	
WI Glamorgan	Gender	✓	✓	personal email	<input type="checkbox"/>
Merched Y Waur Glamorgan	Gender	✓	✓	personal email	
Bridgend Youth Development	Young People	✓	✓	personal email	✓
Bridgend Youth Support	Young People	✓	✓	personal email	<input type="checkbox"/>
Bridgend Youth Council	Young People	✓	✓	personal email/ meeting & presentation	✓
Bridgend Youth Mayor	Young People	✓	✓	personal email	✓
BAVO	Young People	✓	✓	personal email	✓
Family Information Service	Young People	✓	✓	personal email	✓
Bridgend Youth Service	Young People	✓	✓	personal email/ meeting	

Social Media					
Age Cymru West Glamorgan	Age	✓	✓	facebook message	
Care & Repair Cymru	Age/ Disability	✓	✓	facebook message	
AutSide Education and Training	Disability	✓	✓	facebook message	
Bridgend Coalition of Disabled People	Disability	✓	✓	facebook message	
Parc Slip Nature Reserve	Environment	✓	✓	facebook message	
The Wildlife Trust East and West Wales	Environment	✓	✓	facebook message	
Woodland Trust Wales	Environment	✓	✓	facebook message	
WI Bryncethin	Gender	✓	✓	facebook message	
Breeze Bridgend	Gender/ Sports	✓	✓	facebook message	
Cwm Taf Morgannwg University Health Board	Health	✓	✓	facebook message	
Bridgend Town Centre Hub	Other	<input type="checkbox"/>	✓	facebook message	

Bridgend Hub	Other	✓	✓	facebook message	
Bridgend Town Hub (16k followers)	Other	✓	✓	facebook message	
Bridgend reach	Other	✓	✓	facebook message	
Bridgend Astronomical Society	Other	✓	✓	facebook message	
All Wales Forum	Other	✓	✓	facebook message	
Memories of Pyle and Kenfig Hill	Other	☐	✓	facebook message	
Cefn, Kenfig Hill and Pyle Community Hub	Other	☐	✓	facebook message	
Kenfig Hill and Pyle News and More	Other	☐	✓	facebook message	
Pyle Community Council Facebook Page	Other	☐	✓	facebook message	
Cefn, Kenfig Hill & Pyle Volunteer Community Cleanup	Other	☐	✓	facebook message	
Pyle, Kenfig Hill, Cornelly, Porthcawl, Maesteg and Bridgend Local Business	Other	☐	✓	facebook message	
Pencoed Hub	Other	☐	✓	facebook message	
Pencoed and surrounding areas buy, sell and swap	Other	☐	✓	facebook message	
Community Hub for Llanharan, Bryncae, Brynna & Mountain Hare.	Other	☐	✓	facebook message	
Love on the rocks Pencoed	Other	☐	✓	facebook message	
Pencoed Volunteer Community Cleanup	Other	☐	✓	facebook message	
Pencoed Panthers Social	Other	☐	✓	facebook message	
Pontycymer to Sarn buy and sell	Other	☐	✓	facebook message	
Friends of Pencoed Comprehensive School	Oyoung People	☐	✓	facebook message	
Brackla Running Club	Sports	✓	✓	facebook message	
Pontycymer Rugby	Sports	☐	✓	facebook message	
First Cymru Buses	Transport	✓	✓	facebook message	
Bridgend Railway Club	Transport	✓	✓	facebook message	
Bridgend Social Cycling	Walking&Cycling	✓	✓	facebook message	
Scouts Bridgend	Young People	✓	✓	facebook message	
Bridgend College	Young People	✓	✓	facebook message	
Pyle Primary Parents	Young People	☐	✓	facebook message	

Parents and guardians of children at Pencoed Comprehensive	Young People	<input type="checkbox"/>	✓	facebook message	
Parents of children at Pencoed Primary	Young People	<input type="checkbox"/>	✓	facebook message	